



B | RILEY® *Securities*

26TH ANNUAL

**INSTITUTIONAL INVESTOR
CONFERENCE**

May 20-21, 2026 | Ritz Carlton Marina del Rey, CA

B RILEY Securities SUGAR RAY LEONARD FOUNDATION

THE KNOCKOUT LOUNGE

Exclusive Access · Limited Entry · Supporting a Great Cause

Scan. Donate. Enter

LIGHTWEIGHT (\$50 donation)
Photo opportunity

CHALLENGER (\$100 donation)
Swag item & photo opportunity

VIP (\$1000)
Photo opportunity, swag, and VIP lounge at Big Fighters, Big Cause











WELCOME

Welcome to the 26th Annual B. Riley Securities Institutional Investor Conference

We return to The Ritz-Carlton for the 26th edition of our Flagship event, we arrive with significant momentum fueled by the partnerships that have helped define our journey. With nearly 1,000 attendees and over 1,500 meetings scheduled, this year's conference is a testament that the most meaningful outcomes are born when the right people connect in the same place at the same time.

Our goal is to extend this influence beyond the boardroom. We take immense pride in our enduring partnership with the Sugar Ray Leonard Foundation, with whom we've raised over \$6 million to help knock out childhood diabetes - thanks in part to your generous support.

This year, we are also proud to spotlight Children's Hospital Los Angeles (CHLA). This world-class team is at the vanguard of pediatric diabetes research and care, a mission we are honored to champion alongside the Foundation.

THE SCHEDULE AHEAD

On Tuesday evening, we kick things off with our Welcome Reception, setting the tone for two days of connection and celebration, including a special appearance from Sugar Ray Leonard at the Knockout Lounge, an exclusive experience leading up to our charity boxing event on Wednesday.

Wednesday evening brings one of the most anticipated traditions of the conference, our 15th Annual 'Big Fighters, Big Cause' Charity Boxing Gala. With professional bouts by Golden Boy Promotions and live auctions, this promises to be an unforgettable night of sport and philanthropy.

THE MANDATE

Make the most of the days ahead. Engage fully, forge new partnerships, and dig deep in support of these vital causes. We thank you for your continued trust, your partnership and your presence.

Now, let's go make the most of it.

The B. Riley team

CONFERENCE AGENDA

Please note that the schedule is subject to change.

Please login to your MeetMax account to view updated information about the conference.

If you cannot access the system, please email conference@brileysecurities.com.

TUESDAY, MAY 19TH

- 3:00 P.M.** Conference Pre-Check (Early Registration)
- 4:00 P.M.** Welcome Reception: Join us for cocktails, hors d'oeuvres, and networking as we kick off the 26th Annual Investor Conference.

WEDNESDAY, MAY 20TH

- 7:00 A.M.** Conference Registration & Breakfast
- 7:30 A.M.** 1-on-1 Meetings, Analyst-Hosted Roundtables, and Fireside Chats
- 11:15 A.M.** Lunch
- 12:15 P.M.** 1-on-1 Meetings, Analyst-Hosted Roundtables, and Fireside Chats
- 5:00 P.M.** Big Fighters, Big Cause Charity Boxing Night with the Sugar Ray Leonard Foundation

THURSDAY, MAY 21ST

- 7:00 A.M.** Conference Registration & Breakfast
- 7:30 A.M.** 1-on-1 Meetings, Analyst-Hosted Roundtables, and Fireside Chats
- 11:15 A.M.** LUNCH
- 12:15 P.M.** 1-on-1 Meetings, Analyst-Hosted Roundtables, and Fireside Chats
- 4:00 P.M.** Farewell Reception



2026 MARKET UPDATE WITH **ART HOGAN**

Wednesday May 20, 2026 | Lunch Session | Ritz Ballroom, The Ritz-Carlton

SESSION OVERVIEW

As the economic landscape continues to evolve through 2026, navigating shifting Federal Reserve policies, geopolitical headwinds, and the transformative impact of AI on corporate earnings requires a steady, data-driven approach. In this Lunch General Assembly keynote, Art Hogan will provide a comprehensive market update, cutting through the daily noise to deliver actionable insights on the US equity markets. Attendees will gain a clearer understanding of current market valuations, earnings growth trajectories, and the fundamental backdrop supporting ongoing economic expansion.

KEY THEMES & TAKEAWAYS

- **The Macro Environment:** An analysis of current inflation trends, GDP growth expectations, and the Fed's interest rate trajectory in 2026.
- **Earnings & Equity Outlook:** Why corporate earnings growth remains a critical driver for the S&P 500, including an analysis of stand out sectors like technology, financials, and healthcare.
- **Sector Rotation & Strategy:** Actionable strategies for balancing opportunities between high-growth technology (evaluating software versus hardware) and fundamentally strong, traditional sectors.
- **Cutting Through the Noise:** How to maintain a long-term perspective and identify true market catalysts amidst AI capital expenditure debates, shifting consumer spending habits, and prominent geopolitical headlines.

ABOUT THE SPEAKER

Art Hogan is the Chief Market Strategist at B. Riley Wealth. With a distinguished career spanning over 30 years concentrating on the US equity markets, Art is a widely respected and well-known figure in the financial industry.

Throughout his career, he has served as a member of the Board of Governors of the Boston Stock Exchange, Inc., and a member of the Board of Directors of NASDAQ OMX BX, Inc. Known for his insightful commentary and straightforward, accessible manner, Art is a frequent fixture in the financial media. He regularly appears in live interviews on CNBC, FOX Business, and Bloomberg TV, and his market analysis is frequently quoted in *The Wall Street Journal*, *The New York Times*, *Financial Times*, and *Yahoo! Finance*. His deep expertise and pragmatic approach help investors and professionals alike make sense of complex market dynamics.

MATURING COSMOS: FINDING ALPHA IN NEXT-GEN SPACE INFRASTRUCTURE AND SERVICES

Wednesday May 20, 2026 | 9:00 AM – 9:45 AM

Location: Admiralty Room, The Ritz-Carlton, Marina del Rey

The commercial space sector has reached a critical inflection point. As the industry matures beyond risky and long-horizon concepts, institutional capital is pivoting to provide pragmatic, revenue-generating “picks and shovels” and actionable insights enabled by the new space economy. This panel promises a rigorous discussion on actionable, near-term space investments and decodes how resilient companies are successfully de-risking via “dual-use” mandates that serve both national security and commercial markets. By distinguishing the near-term realities of on-orbit edge processing from the futuristic hype of space data centers, these leaders will map out the foundational technologies securing sticky contracts today and building the orbital ecosystem of tomorrow.

FEATURED PANELISTS:



ALEX FIELDING

CEO and Chairman at Privateer Space and Orbital Insight

Alex Fielding is a leader and entrepreneur in the space and robotics industries with over 25 years of experience in engineering, management, and innovation. He is the CEO and Chairman of Privateer Space and Orbital Insight; the leading privately traded geospatial intelligence platform company. He is also the Founder and Director of Ripcord, a company that uses vision-guided industrial robots for digitization and cloud-based access. Fielding has a proven track record of creating and scaling successful companies, products, and technologies that have a positive impact on the world. He co-founded GPS company Wheels of Zeus with Apple’s co-founder Steve Wozniak, which was sold in 2006. He was CTO at Power Assure and VP at Vigilant before starting Ripcord while a contractor at NASA. He is an advisor to Astra. He holds multiple patents in the fields of vision guided robotics, machine learning, and cloud computing. He is a founding member of Singularity University and an active contributor to the IETF. He is passionate about advancing the frontiers of science, technology, and education for the benefit of humanity.

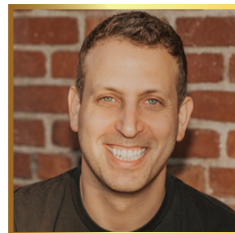
MODERATORS:



MIKE CRAWFORD

SMD, Sr. Research Analyst & Head of Discovery Group, B. Riley Securities

Mike Crawford leads the Discovery Group at B. Riley Securities, where he bridges the gap between highly disruptive, emerging technology sectors and institutional capital. With over a decade of experience analyzing complex markets, Crawford specializes in evaluating the financial outlook, operational metrics, and paths to profitability for early-stage and growth-oriented companies. He plays a critical role in helping institutional investors navigate the risks and structural opportunities of nascent asset classes as they transition into public markets.



DANIEL WALLMAN

General Partner, Balerion Space Ventures

Daniel Wallman is a General Partner at Balerion Space Ventures, where he invests in early- to mid-stage companies building the critical infrastructure and applications of the new space and defense economy. Drawing on more than a decade of technical and commercial experience across aerospace and frontier technology, he focuses on mission-critical platforms with deep technical moats and scalable economics, backing teams that are enabling the next wave of space, defense, and advanced energy systems. Before entering venture capital, Daniel spent years as an aerospace engineer at Boeing’s advanced Phantom Works organization, working on next-generation aerospace systems, and later joined Blue Origin. He holds a bachelor’s and master’s degrees in aerospace engineering from the University of Southern California and an MBA in Finance from the Massachusetts Institute of Technology, combining technical depth with institutional investing expertise.



GRIFFIN BOSS

Equity Research Analyst, B. Riley Securities

Griffin Boss is an equity research analyst in the Discovery Group with B. Riley Securities. He holds an M.B.A. in capital markets and investments from the Kenan-Flagler Business School at the University of North Carolina at Chapel Hill and a B.A. in economics from the University of Southern California.

THE AGENTIC PIVOT: RE-ARCHITECTING THE SAAS STACK

Wednesday May 20, 2026 | 1:00 PM – 1:45 PM

Location: Admiralty Room, The Ritz-Carlton

Agentic AI is reshaping the enterprise software stack - compressing workflows, rewriting pricing models, and forcing a hard look at which SaaS businesses are built to last. This panel brings together a cross-section of operators and capital allocators to debate what the shift really means for the next cycle of public and private equity. This panel cuts through the “SaaS Apocalypse” noise to examine where durable value is being created, how capital is being deployed, and why the SaaS evolution may represent opportunity as much as disruption. From communications infrastructure to venture lending to alternative asset management, this conversation spans the full stack - covering business model reinvention, AI-native winners, and the investment frameworks that matter most right now.

FEATURED PANELISTS:



DAVID MORKEN, Co-founder, CEO, and Chairman, Bandwidth (BAND)
David Morken is the Founder and CEO of Bandwidth, a leading global enterprise cloud communications company. Morken has scaled Bandwidth from a startup in his home to a publicly traded industry leader that powers some of the world’s most recognizable digital platforms. He is widely recognized for pioneering a “mission-first”

corporate culture that drives high employee engagement and customer service excellence. Prior to his career in technology, Morken served on active duty in the United States Marine Corps as a Judge Advocate, criminal prosecutor, and Headquarters Company Commander. He also served as a Special Assistant U.S. Attorney.



JONATHAN LAMM Senior Managing Director and Chief Financial Officer, Credit, Blue Owl (OBDC)
Jonathan Lamm is a Senior Managing Director at Blue Owl and Chief Financial Officer, Credit. He also serves as CFO and COO of the Blue Owl Business Development Companies (BDCs), including Blue Owl Capital Corporation (OBDC). Prior to joining Blue Owl, Lamm was a Managing Director at Goldman Sachs and served as CFO and

Treasurer of Goldman Sachs BDC . Throughout his 22 years at Goldman Sachs, he held various positions including as COO and CFO of GSAM Credit Alternatives. Prior to Goldman Sachs, he worked in public accounting at Deloitte & Touche.

MODERATOR:



ERIK SUPPIGER, Managing Director, Sr. Research Analyst, B. Riley Securities

Erik Suppiger is a Managing Director and Senior Equity Research Analyst at B. Riley Securities, specializing in enterprise software, cybersecurity, and IT infrastructure. With over 25 years of experience on Wall Street, Suppiger is a multi-time award winner in the Thomson Reuters and The Wall Street Journal “Best on the Street” analyst surveys. He holds a B.S. in Business Administration from the Boston University School of Management.



KYLE BROWN Chief Executive Officer, Trinity Capital (TRIN)

Kyle Brown is Trinity Capital's CEO, and has served as President, Chief Investment Officer and a member of the Board of Directors since 2019. He is an original member of the firm’s Investment Committee and was a Managing Partner of its predecessor funds since 2015. Prior to Trinity, Brown founded and served as managing partner of Sharp

Equity and as President of Brown Equity, companies established to provide equity and bridge debt financing in the real estate sector.



UMESH SACHDEV CEO and Co-Founder, Uniphore

Umesh Sachdev is the CEO and Co-founder of Uniphore, a sovereign and open Business AI platform keenly focused on helping large organizations turn AI into real business outcomes. Uniphore’s Business AI Cloud is among the first enterprise-grade AI platforms purpose-built to unify data, knowledge, models, and agents in a way that is truly

usable, scalable, and governed for business. A recognized voice on the future of enterprise AI, Sachdev has been honored as a ‘Next Generation Leader’ by TIME, an ‘Innovator Under 35’ by MIT Technology Review, and a ‘40 Under 40’ Bright Young Business Leader by The Economic Times.

THE INFRASTRUCTURE SUPERCYCLE: CAPITALIZING ON CAPACITY CONSTRAINTS ACROSS THE TECH STACK

Wednesday May 20, 2026 | 2:30 PM - 3:15 PM

Location: Admiralty Room, The Ritz-Carlton, Marina del Rey

The global rush to scale AI infrastructure has transformed capacity constraints into one of the market's most compelling investible themes. Where there are bottlenecks, there are high barriers to entry, pricing power, and massive capital expenditure cycles. This thought-leadership panel brings together experts from across the tech stack—spanning semiconductor yield, advanced optical materials, data center operations, and infrastructure procurement—to translate these operational realities into actionable investment opportunities. By unpacking the distinct supply-demand dynamics at each layer of the hardware ecosystem, our panelists will provide a multi-angle view on where capital is flowing, which sectors command structural leverage, and how investors can capture value in the next wave of digital infrastructure growth.

FEATURED PANELISTS:



MIKE SLESSOR, Chief Executive Officer, FormFactor (FORM)

Michael D. Slessor is Chief Executive Officer and Director of FormFactor, Inc. He previously served as President, and as Senior Vice President and General Manager, MicroProbe Product Group. Before joining FormFactor, he was President and Chief Executive Officer of MicroProbe through the 2012 closing of FormFactor's acquisition of MicroProbe. Prior to joining MicroProbe, he held various management, product-marketing, and applications-engineering positions in the semiconductor industry, primarily with KLA. Slessor received his Ph.D. in Aeronautics and Physics from the California Institute of Technology and his B.A.Sc. in Engineering Physics from the University of British Columbia.



TIM BETTLES, VP of Business Development, AXT, Inc. (AXTI)

Tim Bettles, AXT's VP of Business Development since 2017, oversees North American commercial operations and global partnerships. With 30+ years in semiconductors, he began in R&D focusing on plasma processes at Plessey Research and Technology and Philips Semiconductors. Transitioning to commercial roles, he joined Trikon (later SPTS Technologies), then IQE. Relocating to the U.S. in 2001, he managed IQE's optoelectronics business. In 2006, he moved into the III-N space first for Crystal IS then SETi, where he developed new markets for AIN-based materials and ultraviolet LEDs. He holds a bachelor's degree with honors in Electronic Materials Engineering from Swansea University.



PATRICK FLEURY, Chief Financial Officer, TeraWulf Inc. (WULF)

Patrick Fleury is the Chief Financial Officer of TeraWulf Inc., where he is responsible for directing and overseeing the financial activities of the Company, including investment of funds and additional capital for expansion. Fleury brings 24 years of finance experience, comprising capital markets, principal investing, and advisory roles. Most recently, he served as a founding member of the credit team at Platinum Equity, where he was responsible for public and private credit investments. Before that, he was a Managing Director at Blackstone's global credit platform, GSO Capital Partners. Fleury began his career in the Global Energy & Power Investment Banking Group at Banc of America Securities, LLC. He received a BA, magna cum laude, in Economics and Government & Legal Studies from Bowdoin College.



BRAD MCLAUGHLIN, Managing Partner, Infrastructure Strategist, agil.IT

Brad McLaughlin is a seasoned infrastructure strategist who has led large-scale colocation sourcing for TikTok and General Motors' autonomous vehicle division. Currently, he serves as an advisor to hyperscale platforms, AI firms, and data center operators, guiding them through the complexities of high-density capacity planning, global interconnectivity, and sophisticated transaction methodologies. With deep expertise in wholesale, retail, and edge pricing models, McLaughlin provides a "full-stack" perspective on infrastructure. His experience spans the entire supply chain—from complex real estate negotiations to the procurement of critical compute, networking, and power hardware—helping organizations build resilient and cost-effective digital footprints for the AI era.

MODERATOR:



CRAIG A. ELLIS, SMD, Sr. Semiconductor Analyst & Director of Research, B. Riley Securities

As Director of Research and Sr. Semiconductor Equity Research Analyst at B. Riley Securities, Craig Ellis holds a comprehensive, macro view of the entire technology and semiconductor ecosystem. He will leverage his deep analytical expertise to guide this cross-sector dialogue, connecting the dots between silicon yield, optical bandwidth, and the physical power constraints redefining the industry.

RARE EARTHS & CRITICAL MINERALS: STATE OF THE UNION

THURSDAY MAY 21, 2026 | 9:00 AM - 9:45 AM

Location: Admiralty Room, The Ritz-Carlton, Marina del Rey

The mandate for secure, domestic supply chains has driven unprecedented interest in critical minerals, but navigating the path from exploration to commercial production requires rigorous asset evaluation. This panel delivers a comprehensive “State of the Union” on the rare earths sector, moving past geopolitical headlines to analyze recent capital deployment and deal flow. Join our industry veterans as they unpack the defining characteristics of successful operators - prioritizing asset quality, security of feedstock, disciplined capital commitments, and strategic vertical integration. By examining current processing bottlenecks, this discussion will pinpoint the most attractive, risk-adjusted segments of the value chain for institutional capital today.

FEATURED PANELISTS:

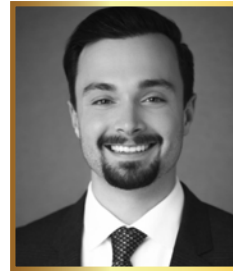


MARK SMITH

Executive Chairman, President, and CEO, NioCorp (NB)

Mark Smith joined NioCorp as CEO and Chairman and has 40+ years of experience in the mining and mineral processing industries. Formerly, he was President, CEO & Director of MolyCorp; CEO and

Director of Largo Resources; CEO and President of Chevron Mining; and Director of Companhia Brasileira de Metalurgia e Mineracao Ltd. (“CBMM”), the largest niobium producer in the world. He has led efforts that raised more than \$3 billion for previous mining and manufacturing projects. Smith also serves as CEO and Chairman of IBC Advanced Alloys and US Vanadium LLC. He holds a B.Sc. degree in engineering from Colorado State University and a J.D. (cum laude) from Western State University, College of Law.



TREVOR ANDERSON

Head of Business Development, Brazilian Rare Earths (BRE)

Trevor Anderson is a finance professional with experience across private equity and investment banking. Anderson was most recently a Vice President at Denham Capital where he focused on

the financing, construction and ramp-up of Serra Verde Rare Earths, the first operation outside Asia to produce all four magnetic rare earths at scale. Prior to joining Denham, he also held roles on Sprott’s private investments team and PI Financial’s mining investment banking team. Anderson is a CFA Charterholder and holds a Bachelor of Commerce degree from the University of British Columbia.

MODERATOR:



NICK GILES

Senior Equity Research Analyst, B. Riley Securities

Nick Giles is a senior research analyst with B. Riley Securities with a focus on energy, digital assets, and basic materials. He joined the firm as an associate analyst in January 2022 and was promoted to research analyst in August 2024 and to senior research analyst in January 2025. Giles earned his B.A. and M.B.A from the University of Memphis where he was a member of the Men’s Golf team.

MEET OUR SPONSORS



Duane Morris, a law firm with more than 900 attorneys in offices across the United States and internationally, is asked by a broad array of clients to provide innovative solutions to today's legal and business challenges.

SULLIVAN & CROMWELL LLP

Sullivan & Cromwell LLP provides the highest quality legal advice and representation to clients around the world. The results the Firm achieves have set it apart for more than 140 years and have become a model for the modern practice of law. Today, S&C is a leader in each of its core practice areas and in each of its geographic markets. S&C comprises more than 1,000 lawyers who serve clients around the world through a network of 13 offices, located in leading financial centers in Asia, Australia, Europe and the United States. Our market leading practices focus on M&A, finance and capital raising, complex regulatory issues, corporate governance, artificial intelligence, legislative developments, significant litigation and enforcement matters, corporate investigations and tax matters.



Alliant Insurance Services is among the top 5 largest and fastest-growing insurance brokerage and consulting firms in the United States. Fueled by entrepreneurialism and driven by results, Alliant operates on the belief that more is possible and expectations are meant to be exceeded. Our clients and partners have profound confidence in us to deliver in all market climates through the design and delivery of innovative solutions and services across a broad range of industry verticals. Our people stand as the backbone of our organization. We proudly employ a team of diverse, driven, and exceptional people and invest heavily in their success, giving our brokerage and consulting teams the freedom and resources they need to help their clients grow their businesses to remarkable heights. The result is a dynamic team of professionals who consistently perform at the highest level, while caring and giving back to causes that impact their communities and the world at large. Alliant is built on teamwork and collaboration, a philosophy that has guided our growth and evolution for 100 years. We rise together to meet challenges, think together to drive innovation, and thrive together in our business and in the diverse communities where we operate.



The Money Channel New York City's team has an extensive background encompassing decades of experience in capital markets and investor relations. Our database includes thousands of active market participants. This provides our clients access to thousands of investment professionals, including institutional investors, investment bankers, stockbrokers, and financial planners. Through this network, we help our clients meet their capital market's objectives.

MEET OUR SPONSORS CONT.



Morrison Foerster is a leading global law firm advising innovative companies and financial institutions—from emerging growth companies to Fortune 100 leaders—on market-defining transactions and complex legal matters. The firm offers a full range of legal services relating to the securities industry, including capital markets, public company advisory, corporate governance, M&A, and regulatory and enforcement matters, and regularly represents issuers, underwriters, and investors in sophisticated U.S. and cross-border transactions. Morrison Foerster has been named to The American Lawyer’s A-List for 21 of the past 22 years and is consistently ranked by Chambers and The Legal 500 across major global markets, reflecting the firm’s commitment to legal excellence and client service.



Odyssey Transfer and Trust Company (Odyssey) is a tech-forward, service-driven transfer agent and trust company, delivering streamlined, customized, and fully digital solutions to companies across North America. With offices throughout the US and Canada—and co-agents in London, Hong Kong, and Australia—our portfolio includes over 1,300 issuers and more than \$60B in Corporate Trust transactions. Whether acting as transfer agent, trustee, paying agent for mergers, or managing equity plans, we simplify processes, enabling smooth, efficient transactions. By leveraging technology and a client-first approach, Odyssey has redefined the market’s expectations of transfer agent and trust services by making complex processes simple, fast, and easy. To learn more visit www.odysseytrust.com



BDO USA, P.C. is one of the nation’s leading accounting and advisory firms, providing assurance, tax, and advisory services to clients across a broad range of industries. As the U.S. member firm of the global BDO network, it combines national capabilities with international resources to help organizations navigate growth, risk, and change.



DLA Piper is a global law firm helping our clients achieve their goals wherever they do business. Our pursuit of innovation has transformed our delivery of legal services. With offices in the Americas, Europe, the Middle East, Africa and Asia Pacific, we deliver exceptional outcomes on cross-border projects, critical transactions and high-stakes disputes. Every day we help trailblazing organizations seize business opportunities and successfully manage growth and change at speed. Through our pro bono work and community investment around the world, we help create a more just and sustainable future. Visit dlapiper.com to discover more.

MEET OUR SPONSORS CONT.



Fidelity Investments mission is to strengthen the financial well-being of our customers and deliver better outcomes for the clients and businesses we serve. Fidelity's strength comes from the scale of our diversified, market-leading financial services businesses that serve individuals, families, employers, wealth management firms, and institutions. With assets under administration of \$15.0 trillion, including discretionary assets of \$5.9 trillion as of March 31, 2025, we focus on meeting the unique needs of a broad and growing customer base. Privately held for 78 years, Fidelity employs more than 77,000 associates across the United States, Ireland, and India.



Gateway is a leading financial communications and digital media advisory firm specializing in assisting emerging growth companies for over 25 years. We work with businesses at various stages of corporate development, from private startups to public enterprises. Our team of experts offers decades of experience in all facets of corporate communications, including investor relations (IR) and public relations (PR), as well as cutting-edge digital media services such as branding & creative, web development, and social media. Gateway clients are industry leaders in technology, consumer, industrials, finance, business services, and more. To learn more about Gateway Group, our offerings, or how we can help meet your communications needs, visit Gateway-Grp.com or connect with us on LinkedIn.



HUB International is one of North America's largest insurance brokerages, with more than 650 offices and 10,000 specialists across the U.S. and Canada. When you work with HUB, you gain access to a connected network of experts across commercial insurance, employee benefits, retirement services, and private wealth management — all focused on building solutions tailored to your business and your people. HUB's approach is built on advocacy: understanding what matters to you and making sure you're protected, prepared, and positioned for what's ahead.



Morgan, Lewis & Bockius LLP, our team of more than 2,200 lawyers and legal professionals provides comprehensive corporate, transactional, litigation, and regulatory services in major industries, including energy, financial services, healthcare, life sciences, retail and ecommerce, sports, technology, and transportation. We focus on both immediate and long-term goals with our clients, helping them address and anticipate challenges across vast and rapidly changing landscapes.

MEET OUR SPONSORS CONT.



O'Melveny, a global law firm with 17 offices, is home to a talented team of more than 800 lawyers who help our clients grow, protect their assets, and navigate the challenges of complex law and regulation. A combination of sophisticated legal and business counseling and impeccable service has made us counsel of choice to an ever-growing list of market leaders, creating opportunities for our people to engage in the most challenging and exciting work. Even better, while we set an incredibly high bar for ourselves, we love what we do and have fun along the way. and capital-raising transactions across an array of industries, including technology, health care, media, energy financial, communications, retail, real estate, and energy.



Taft Law is one of the fastest growing national law firms in the United States, with industry leading capital markets, securities, M&A, finance, and FinTech practices. Widely recognized as a preeminent, strategic, and value-adding legal partner, Taft strategically navigates business transactions and complicated regulatory environments in a wide range of industries throughout the United States and beyond. Our top-ranked Chambers lawyers work seamlessly with clients, bankers, and other business professionals to enhance clients' ROI and deliver creative solutions for their current business needs and long-term objectives. Our 1,250+ domestic lawyers with a global network provide quality legal services and creativity driven by a client-partnership and client-first focus. Come chat with us, and you'll see the Taft difference, and why Taft is The Modern Law Firm.



NBD is a corporate legal boutique. NBD prides itself on operating as a true partner to its clients, providing responsive and practical solutions and highly expert transaction execution to real-world business issues. Clients include high-net worth individuals, private companies, private funds, investment banks and public companies with market caps of up to \$15 billion.



Wollmuth Maher & Deutsch LLP is a NYC-based litigation, corporate, employment, and bankruptcy law firm providing creative, results-oriented, and cost-effective solutions tailored to the unique needs of particular cases and clients. Our cases and clients extend across the globe. Our lawyers have been recognized as leaders in their fields by independent ratings sources, including Chambers USA, Super Lawyers, and Martindale-Hubbell.* We truly value our clients, and develop relationships that extend far beyond the individual matters for which we are initially engaged. We represent our clients' interests with tenacity and zeal. We bring the same passion to our profession. Our lawyers care passionately about the law, the legal profession, and the communities in which we live, and are deeply involved in bar and civic activities. We hire superb young lawyers and take their training seriously. We believe in equal justice under law and the importance of diversity in the workplace.

MEET OUR SPONSORS CONT.



BANC OF CALIFORNIA

Banc of California is one of the nation's premier, relationship-focused, full-service business banks that has the resources and expertise to help businesses grow and succeed. We have been a strong and trusted banking partner to businesses since 1941. Banc of California is the largest independent bank headquartered in Los Angeles and the third-largest bank headquartered in California, with over \$34 billion in assets and 79 full-service branches located throughout California, and in Denver, Colorado, and Durham, North Carolina, as well as through regional offices nationwide. We provide banking and treasury management services to small, middle[1]market and venture-backed businesses. We also serve the Community Association Management industry nationwide with our technology[1]forward platform, SmartStreet™. Our depth of resources and financial strength allow us to adapt quickly and thoughtfully, delivering the best solutions to help our clients achieve their financial goals. The bank is committed to its local communities through the Banc of California Charitable Foundation, and by supporting organizations that provide financial literacy and job training, small business support, affordable housing, and more. In October 2023, we announced a \$4.1 billion, three-year community benefit plan to make a meaningful and positive difference in the communities we serve.



MZ North America is the US division of MZ Group, a global leader in investor relations and corporate communications. We provide innovative, customized services to domestic and multinational private and public companies through a unique, fully-integrated "one-stop-shop" business model. By delivering a comprehensive suite of products and services through one point of contact, MZ offers services to all relevant markets geared to helping our clients build a sustainable public brand.



Ontra is the leader in AI-powered solutions for the private markets. Powered by industry-leading AI, data from over 2 million contracts, and a global network of legal professionals, Ontra automates critical private market workflows across the fund lifecycle. Ontra's solutions transform unstructured data trapped in static documents into actionable intelligence, enabling firms to accelerate contracts, streamline compliance, and automate entity management. Trusted by more than 1,000 global GPs, investment banks, law firms, and advisors - including nine of the top ten PEI-ranked firms worldwide - Ontra helps firms focus on what's important. Learn more at www.ontra.ai.



Elev8 New Media is an award-winning boutique public relations agency that specializes in results-driven media relations and corporate communications.



FINSIGHT creates high-reliability financial technology that provides unparalleled visibility and actionable insights into capital markets, M&A and other Corporate finance events.

MEET OUR SPONSORS CONT.



ICR Capital is a leading equity capital markets advisory firm that provides unbiased, strategic guidance to corporate management teams, financial sponsors, venture capital firms, and boards of directors as they navigate high-stakes capital markets transactions. The firm's Convertible and Equity Derivatives Advisory team, led by Raj Imteaz, brings together former bankers, accountants, and lawyers with decades of Wall Street experience, having collectively executed more than 400 convertible and equity derivatives transactions, further strengthening ICR Capital's expertise and credibility in the market.



IM8 is a premium daily nutritional supplement, co-founded by David Beckham, with global ambassadors including tennis world No.1 Aryna Sabalenka, F1 driver Ollie Bearman, and NBA champion Giannis Antetokounmpo. 16 supplements combined into one delicious drink — 90+ world-class ingredients delivering the vitamins, minerals, probiotics, adaptogens, and superfoods your body needs. No more handfuls of pills. No more guessing what you're missing. Just mix with water, shake, drink, and go. Built for anyone who takes their health seriously without wanting it to take over their life. Everything your body needs, simplified. im8health.com



Nelson Mullins Riley & Scarborough LLP is a full service national law firm that delivers practical, business focused legal counsel across a broad range of industries. The firm emphasizes experience, judgment, and flexibility, pairing deep legal knowledge with a client centric approach that prioritizes efficiency and real world solutions. With more than 1,000 attorneys, policy advisors, and professionals and offices from coast to coast, the firm offers a multidisciplinary platform capable of supporting complex legal needs nationwide. Nelson Mullins spans corporate and transactional matters, securities, finance, litigation, government relations, real estate, technology, and intellectual property, allowing clients to access integrated advice from a single, trusted team. The firm's measured growth reflects a commitment to aligning its capabilities with evolving client needs while maintaining a culture of collaboration and tireless advocacy. The Securities Practice at Nelson Mullins advises issuers, underwriters, sponsors, and investors on a wide range of public and private capital markets transactions. The team has extensive experience across initial public offerings, follow on offerings, SPAC transactions, private placements, and Rule 144A offerings, representing clients at every stage of the capital raising lifecycle. Nelson Mullins Securities lawyers collaborate closely with the firm's corporate, finance, and industry teams to provide seamless, end to end deal support, with a focus on clarity, responsiveness, and practical execution. The practice serves clients across numerous sectors, including technology, energy, media and communications, and financial services, and is known for guiding transactions with an informed understanding of market dynamics and regulatory considerations.

MEET OUR SPONSORS CONT.



Odyssey is the future of energy. Designed for sustained energy, focus, clarity, mood, and performance, Odyssey is powered by high-potency adaptogens and nootropics, including Organic Lion's Mane, Cordyceps, L-Theanine, Panax Ginseng, and naturally sourced green tea caffeine, with no artificial ingredients and no added sugar. With bold, craveable flavors, Odyssey provides clean, functional energy without the crash, available in both 222mg and 85mg caffeine formats to power whatever the day demands. Odyssey products are Non-GMO, Vegan, Gluten-Free, Kosher, and made with real fruit juice. Odyssey is available in over 9,200 retail locations nationwide, with continued expansion across natural, mass, and club channels. Founded by entrepreneur Scott Frohman in 2022, Odyssey is more than a beverage, it's a smarter way to energize. Learn more at odysseyfunctionalenergy.com and follow @DrinkOdysseyEnergy.



Quinn Emanuel Urquhart & Sullivan, LLP is a 1300+ lawyer business litigation firm—the largest in the world devoted solely to business litigation and arbitration.



Resources Global Professionals (RGP) is a global consulting firm that helps businesses transform through agile workforce solutions. RGP combines experienced talent with a human-centered approach to deliver practical strategies and hands-on execution in finance & accounting, risk & compliance, technology enablement, and business transformation. Serving over 2,800 clients worldwide - including more than 85% of the Fortune 100 - RGP enables organizations to navigate change, optimize performance, and achieve sustainable growth.



S&P Global Market Intelligence we understand the importance of accurate, deep and insightful information. Our team of experts delivers unrivaled insights and leading data and technology solutions, partnering with customers to expand their perspective, operate with confidence, and make decisions with conviction. S&P Global Market Intelligence is a division of S&P Global (NYSE: SPGI). S&P Global is the world's foremost provider of credit ratings, benchmarks, analytics and workflow solutions in the global capital, commodity and automotive markets. With every one of our offerings, we help many of the world's leading organizations navigate the economic landscape so they can plan for tomorrow, today. For more information, visit www.spglobal.com/marketintelligence



Harbor Access is an award-winning investor relations advisory firm specializing in small- and mid-cap companies. With more than 20 years of global capital markets experience, we design tailored IR programs that enhance visibility, strengthen credibility, and deepen investor engagement. Our multidisciplinary approach combines strategic insight with hands-on execution, delivering measurable value aligned with your company's stage, sector, and capital markets objectives. Learn more at harbor-access.com.

MEET OUR SPONSORS CONT.



Vcheck is a global due diligence & investigations firm that specializes in open-source and human intelligence. Our human-led, tech-enabled approach to background checks allows for the most comprehensive intelligence in our marketplace, and reports are delivered 40% faster than our competitors. We empower 200+ investigators to constantly improve the investigations process with proprietary technology and best-in-class research methodology. Our platform provides a centralized place to order, track, and retrieve due diligence reports and continuously monitor subjects across news, sanctions, political exposure, criminal records and regulatory issues.

The logo for Morrison Foerster, consisting of the words "MORRISON" and "FOERSTER" stacked vertically in a bold, uppercase, sans-serif font. The letters "M" and "F" are stylized with horizontal bars.

**MORRISON
FOERSTER**

MoFo is proud
to sponsor the
**26th Annual
B. Riley Securities
Investor Conference,**

celebrating another year
of industry insights and
investor engagement.



mofo.com

Sullivan & Cromwell
is proud to support the
B. Riley Securities
26th Annual Institutional
Investor Conference

SULLIVAN & CROMWELL

Quarter after quarter, global business continues to evolve and grow. Sullivan & Cromwell has been helping clients stay the course for more than a century. We provide high-quality counsel and intense dedication to solving a variety of complex issues faced by our clients. Our market leading practices focus on M&A, finance and capital raising, complex regulatory issues, corporate governance, legislative developments, significant litigation and enforcement matters, corporate investigations and tax matters.



BEIJING | BRUSSELS | FRANKFURT | HONG KONG | LONDON
LOS ANGELES | MELBOURNE | NEW YORK | PALO ALTO
PARIS | SYDNEY | TOKYO | WASHINGTON, D.C.

sullcrom.com

DUANE MORRIS PROUDLY SUPPORTS
B. RILEY'S 26TH ANNUAL INSTITUTIONAL
INVESTOR CONFERENCE

Ten years. Hundreds of transactions. One team.

For over a decade, Duane Morris has been the go-to capital markets counsel for midmarket issuers and the underwriters who serve them - building the structures others follow.

A DECADE OF MARKET LEADERSHIP IN:

- At-the-market offerings
- Baby bonds & retail preferred stock
- Hybrid equity & convertible structures
- Registered directs, PIPEs & shelf offerings
- Disclosure counsel
- Cross-border & MJDS offerings

DuaneMorris[®]

WHAT WE DO FOR YOU

ATM Programs Market leader for 10+ years. Full lifecycle counsel from setup through sales.	Baby Bonds & Retail Preferred Exchange-listed debt and preferred structures for retail investors. We helped pioneer the product.
Hybrid Equity & Convertibles Preferred stock, convertible notes, and bespoke equity linked structures.	CMPOs, Registered Directs & PIPEs Speed-to-capital solutions for issuers that need to move at market speed.
Disclosure Counsel Streamlined registration and Exchange Act counsel aligned to issuer timelines.	Cross-border & MJDS U.S.-Canada and other cross-border offerings for dual-listed issuers.

TALK TO US

DEAN M. COLUCCI Securities & Capital Markets dmcolucci@duanemorris.com	JAMES T. SEERY Securities & Capital Markets jtseery@duanemorris.com
---	--

***Built for the deal.
Ready before the window opens.***

BTI Client Service 30 - Five Consecutive Years | IFLR 1000 | The Deal Power Rankings
www.duanemorris.com | Duane Morris LLP - A Delaware limited liability partnership

Innovatively increasing
your company's exposure.



THE MONEY CHANNEL
NEW YORK CITY

MONEYCHANNELNYC.COM



THE NATION'S LEADING SPECIALTY INSURANCE BROKER

In the face of increasing complexity, our approach is simple: hire the best people and invest extensively in the industries and clients we serve. We operate through one national platform, giving clients complete access to our resources and expertise – regardless of where the resource is located – to capitalize on new opportunities to grow and protect their organizations and their people.

FOR MORE INFORMATION, CONTACT:

BRIAN SCHENONE, Senior Vice President
(415) 710-2278
brian.schenone@alliant.com

THOMAS SHASHATY, First Vice President
(646) 477-8329
thomas.shashaty@alliant.com



Transfer Agency, Redefined.

Simple, fast, and easy.

Purpose-built technology backed by deep capital markets expertise delivers fast, compliant, and seamless experiences across transfer agent, corporate trust, M&A, and IPO services.



O'Melveny
is proud to support

**B. Riley Securities, Inc.'s
26th Annual
Investor Conference**

omm.com



Gateway Group is proud to sponsor
the 26th Annual B.Riley Securities
Institutional Investor Conference



**Your Strategic Financial
Communications Partner**

For a complimentary evaluation of your
investor relations and public relations strategy,
connect with us at info@gateway-grp.com

the **NBD** group.

NBD is a prominent Chambers ranked corporate law firm. In just the eight years since its founding, NBD has handled over 200 transactions for clients with an aggregate transaction value of over \$15 billion.

<https://nbdpro.co/>

Responsive. Experienced. Respected.

Morgan Lewis

We are proud to support

**B. RILEY
SECURITIES**

and its 26th Annual
Institutional Investor
Conference

www.morganlewis.com

© 2026 Morgan, Lewis & Bockius LLP, a Pennsylvania limited liability partnership



Partners
in excellence.

We help our clients succeed, offering a premier platform for issuers and underwriters of equity and debt securities to achieve their strategic priorities. We combine smart, sophisticated advice with up-to-date insights to help execute capital-raising deals on optimal terms, guiding clients on key strategies in a dynamic global market.

#1 US Equity IPO – Manager by Deal Count
Bloomberg Q1 2026

DLA Piper is proud to support
B. Riley Securities' 26th Annual
Investor Conference.

dlapiper.com

Era Anagnosti | ATTORNEY ADVERTISING | MRKT0046407



WOLLMUTH MAHER & DEUTSCH LLP

500 Fifth Avenue, New York, New York 10110
Tel: 212 382-3300 • www.wmd-law.com

BDO is a proud
Silver Sponsor of the

26th Annual Institutional Investor Conference

Accountants and Advisors
www.bdo.com

© 2026 BDO USA, P.C.
All rights reserved.



Taft/

The Modern Law Firm.

Strategic counsel and business
innovation for today's dynamic
markets.

Taftlaw.com

Nelson Mullins

is proud to sponsor the
26th Annual B. Riley
Securities Investor
Conference



**NELSON
MULLINS**

ATTORNEYS & COUNSELORS AT LAW

Jon Talcott

Co-Chair, Securities Practice Group

101 Constitution Avenue, NW
Suite 900, Washington, D.C., 20001
202.689.2800

nelsonmullins.com

S&P Capital IQ ^{PRO}
S&P Global
Market Intelligence

Capital IQ: Reinvented

Make a Pro move.

Same depth, breadth and quality of data.
Now powered by AI to transform your workflow.

See how we're
Always Innovating



BANC WITH STRENGTH



**BANC OF
CALIFORNIA**

When you're building a business, you need a bank with the strength, expertise and commitment to tailor solutions to your unique needs.

At Banc of California, we deliver on all three: financial stability that instills confidence, industry expertise that provides a strategic edge, and premier relationship banking with personalized solutions designed to grow and manage your business. **Banc of California — *Where Relationships Matter.***

[bancofcal.com](https://www.bancofcal.com)

MZ

Empowering Investor Relations



Investor Relations
Consulting



Investor
Outreach



SPAC & IPO
Advisory



Public Relations
& Financial Media



Market
Intelligence



Digital Marketing
& Technology

800+
clients globally

25+
years experience

250+
employees worldwide

mzgroup.us

LESS

Reviewing NDAs
from scratch.
Every. Single. Time.

MORE

AI-powered markups
in **NO TIME.**



AI-Powered Solutions
for Private Markets

boardroomalpha

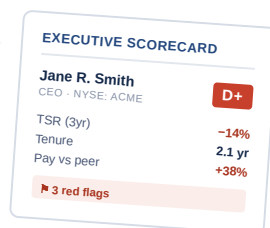
The independent **governance & performance analytics** platform for institutional investors.

- **300K+** executive scorecards across every US public company
- **Real-time governance & risk alerts** on every CEO, CFO & board
- **The Street's deepest SPAC database & analytics**

You're about to meet

30+ management
teams.

We've already met **300,000.**



YOUR B. RILEY 2026 PASS

30 days of full platform access.

Complimentary for conference attendees.

ACTIVATE AT

boardroomalpha.com/briley



B | RILEY *Securities*



www.brileysecurities.com