

**B | RILEY**

*Wholesale & Industrial Solutions*

# ONLINE ONLY AUCTION

**BIDDING CLOSES:** Tuesday, December 12th, Beginning at 9:00am ET

**PREVIEW LOCATION:** HARRISBURG, PA FACILITY – 1500 S. Cameron Street, Harrisburg, PA 17104

**PREVIEW:** Monday, December 11th from 9:00am to 4:00pm ET

*Assets Surplus to the Continuing Operations of: AMES*



## TOOL MANUFACTURING AND ASSEMBLY PLANT

**REAL ESTATE ALSO AVAILABLE**

**FEATURED EQUIPMENT:** CNC Machine Tools • Milling & Grinding • Complete Stamping  
Press Lines • Coil Steel and Wire Fabricating • Assembly • Material Handling & Plant Support



Doosan VM960L CNC Vertical Machining Center



Hyundai WIA L280 CNC Turning Center



Minster E2-200 Straight-Side Press

**For Questions, please contact Paul Brown at 203.313.8935 or [pbrown@brileyfin.com](mailto:pbrown@brileyfin.com)**

**B | RILEY**

*Wholesale & Industrial Solutions*

[www.brileyfin.com](http://www.brileyfin.com)

Proudly conducted  
in conjunction with:

**CRG**  
Capital Recovery Group, LLC

[www.crgllc.com](http://www.crgllc.com)



## CNC MACHINE TOOLS

- DOOSAN VM960L CNC VERTICAL MACHINING CENTER, w/Chip Conveyor & Tooling
- HYUNDAI WIA L280 CNC TURNING CENTER, 10-Position Turret
- HAAS TM-1P CNC TOOLROOM MILL, 10-Position ATC
- CHARMILLES ROBOFIL 510P CNC WIRE EDM
- FARO EDGE PLATINUM PORTABLE CMM ARM, w/Case



Doosan VM960L CNC Vertical Machining Center



Hyundai WIA L280 CNC Turning Center



Haas TM-1P CNC Toolroom Mill



Faro Edge Platinum Portable CMM Arm

Sale conducted by:  
**B | RILEY**  
*Wholesale & Industrial  
Solutions*

In conjunction with:



**For Questions,  
please contact  
Paul Brown at  
203.313.8935 or  
pbrown@brileyfin.com**

## MILLING & GRINDING

- MAZAK HERCULES 16 ENGINE LATHE, 16" Swing x 48" Between Centers
- OKAMOTO ACC-24 60 DX AHD SURFACE GRINDER
- OKAMOTO ACC-20 X 48 AHD SURFACE GRINDER
- OKAMOTO 618 MANUAL SURFACE GRINDER
- CLAUSING CSG 1236AHD SURFACE GRINDER
- (3) BRIDGEPORT VERTICAL MILLING MACHINES, w/Programmable DRO & Power Draw Bars
- HYDMECH H12-P HORIZONTAL BAND SAW, w/Hydraulic Clamping and Feed
- DOALL ML VERTICAL BAND SAW
- CARLTON 3A RADIAL ARM DRILL
- LARGE ASSORTMENT OF MACHINE TOOL ACCESSORIES, Including CNC Tool Holders, Grinding Wheels, Rotary Index Tables, Machine Vises, Collet Sets, and Related Equipment



Okamoto ACC-21 X 48DX Grind-X Surface Grinder



View of Bridgeport Vertical Milling Machines



Hydmech H12-P Horizontal Band Saw



# COMPLETE STAMPING PRESSES, PRESS LINES AND COIL HANDLING EQUIPMENT

- **MINSTER E2-200 STRAIGHT-SIDE PRESS LINE**, 72" x 48" Bed, 10" Stroke, 0-90 SPM, w/Coil Car, Reel, Straightener / Feeder
- **MINSTER MS2-300 STRAIGHT-SIDE PRESS**, 84" x 36" Bed, w/Reel & Feeder
- **VERSION C2-300 & S4-400 STRAIGHT-SIDE PRESS LINES**
- **MINSTER 160-TON STRAIGHT-SIDE PRESS**
- **VERSION 150-TON OBS PRESS**, 50" x 30" Bed, 8" Stroke, 45 SPM

- **MINSTER 75-TON OBI**, 5" Stroke, 40 SPM
- **ROUSELLE 60-TON OBI**, 30" x 18" Bed, 4" Stroke, 110 SPM
- **COE CPPS 300-24 HYDRAULIC STOCK STRAIGHTENER**
- **CWP DOUBLE END COIL REEL**, 1,600 Lb. x 18" W x 48" OD
- **CWP DOUBLE END COIL REEL**, 4,000 Lb. x 18" W x 60" OD
- **BUSHMAN 6-TON COIL UPENDER**



Minster E2-200 Straight-Side Press Line



Version Gap Frame OBS Press



Minster MS2-250-84-36 Press



2 Available

CWP Double End Coil Reel



Bushman 6-Ton Coil Upender

## METAL FABRICATION

- **WYSONG 90-TON x 12' PRESS BRAKE**, w/Hurco Autobend IV BG
- **NIAGARA 10GA x 10' MECHANICAL SHEAR**
- **DAHLSTROM 550-6 ROLL FORMERS**, 6-Stand x 2" Diameter, 6" Between Centers

## ASSEMBLY

- **TAYLOR WINFIELD ENE 12-75 SPOT WELDER**
- **MILLER BOBCAT 250 LP WELDING GENERATOR**
- **MILLER MILLERMATIC 259 X AND 252 MIG WELDERS**
- **CHICAGO 449D PNEUMATIC RIVETERS**
- **ORBITFORM ORBITAL RIVETERS**

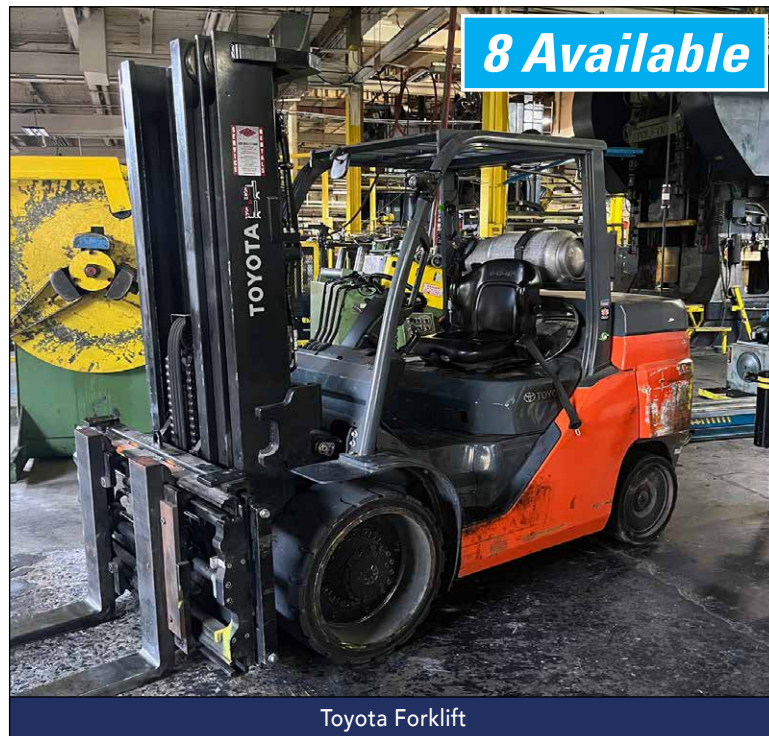


## MATERIAL HANDLING

- **TOYOTA 8FGC70U, PNEUMATIC TIRE LP FORKLIFT**, 15,000 Lb. Capacity, w/side shift
- **(7) TOYOTA 8FBCU30, SOLID TIRE LP FORKLIFTS**, 4,400 Lb. Capacity, w/Side Shift
- **HYSTER S135XL SOLID TIRE LP FORKLIFT**, 6,000 Lb. Capacity, w/side shift
- **SKYJACK 3219 & 4626 ELECTRIC RECHARGEABLE SCISSOR MAN LIFTS**
- **(2) JLG E300AJP ARTICULATING ELECTRIC BOOM LIFTS**
- **OTTAWA DIESEL TRAILER JOCKEY**
- **LARGE ASSORTMENT OF OVERHEAD BRIDGE CRANES, JIB CRANES, ROLLING GANTRY CRANES, LIFTING BARS, CHAINS, AND SLINGS AND RELATED EQUIPMENT THROUGHOUT THE PLANT**

## PLANT SUPPORT

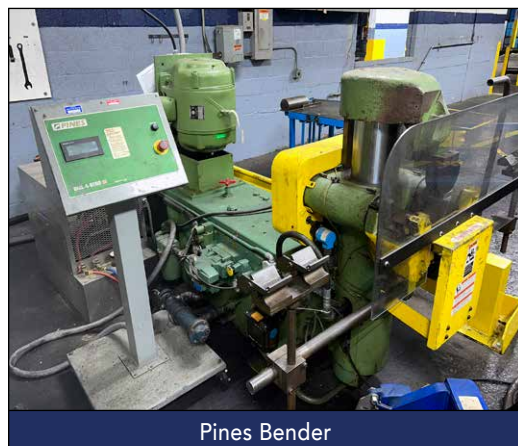
- **INGERSOLL RAND R160NE 200HP TWO STAGE ROTARY SCREW AIR COMPRESSOR**, w/NVC 1000A Refrigerated Air Dryer
- **INGERSOLL RAND SSREP 150 HP ROTARY SCREW AIR COMPRESSOR**, w/Sullair SLR Dryer
- **MARATHON V7230HD VERTICAL HYDRAULIC BALER**
- **LANTECH QX3000 SEMI-AUTOMATIC PALLET STRETCH WRAPPER**
- **NEWCASTLE 50-57A FLOOR LEVEL PALLET DISPENSER**
- **1/2 TO 1-1/2 YARD STEEL SELF-DUMPING HOPERS**
- **MAINTENANCE SHOPS**, Including Pipe Threaders and Benders, Ironworkers, Pedestal Grinders, Drill Presses, Power and Pneumatic Hand Tools, Welding Benches, and Related Shop Equipment
- **MASSIVE SPARE PARTS, SUPPLIES, STORES, AND RAW MATERIALS INVENTORIES**, Including MRO Spares, Hardware and Fasteners, Electrical Components, Perishable Tooling, Pin and Block Gage Sets, Micrometers and Related
- **200+ COILS OF COLD ROLLED STEEL IN WIDE VARIETY OF WIDTHS AND GAUGES!**



**8 Available**

Toyota Forklift

Auction Powered by: **BidSpotter**



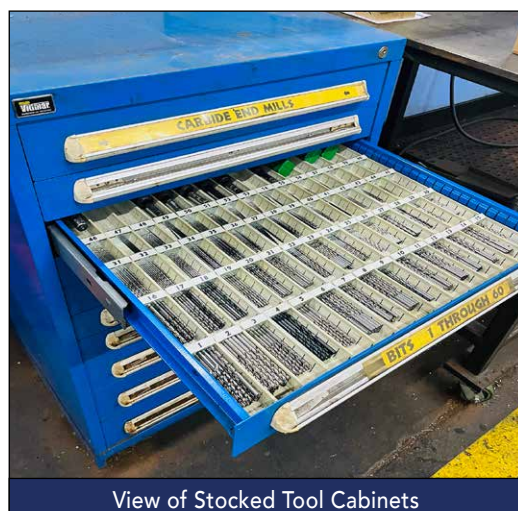
Pines Bender



200+ Coils of Cold Rolled Steel



Kurt Machine Vices



View of Stocked Tool Cabinets



Ingersoll Rand R160NE 200HP Two Stage Rotary Screw Air Compressor

Check Website for Terms & Conditions  
**www.crgllc.com**

Capital Recovery Group, PA License #AU005257