



10

ACCOMPLISHMENTS

July 1 – September 30, 2025



mmeri.famu.edu

FAMU FLORIDA A&M UNIVERSITY
MEDICAL MARIJUANA EDUCATION
AND RESEARCH INITIATIVE

FAMU FLORIDA A&M UNIVERSITY
MEDICAL MARIJUANA EDUCATION
AND RESEARCH INITIATIVE

**CONVERSATIONS
ON CANNABIS**
EDUCATE. LEARN. TALK.

Table of Contents

4

Executive Summary

5

MMERI Program Overview

5

Mission & Vision

6

Program Components & Goals

7

1Q Snapshot: MMERI Components and Accomplishments

9

Education

13

Community Engagement

27

Communications

41

Audience Reach & Engagement

43

Pedagogical Research

46

Appendix

47

Appendix A: MMERI Oversight Committee and Advisory Committee Members

47

Appendix B: Directory of Community Engagement and Outreach Partner Groups

49

Appendix C: Media Clips/News Coverage/ Links to MMERI Channels

50

Contact Us



New Fiscal Year Opens Doors for MMERI

The first quarter of Fiscal Year 2025-2026 saw Florida A&M University’s Medical Marijuana Education and Research Initiative not only continue to build on the program’s successful outreach and engagement strategy but also launch a study that will create additional opportunities to advance our mission as a leader in cannabis education.

While there were many highlights in the quarter, one in particular stands out for its effort to broaden MMERI’s knowledge about the unregulated market of cannabis-related products. FAMU researchers Drs. Mandip Sachdeva and Arvind Bagde began a study that looks into off-the-shelf products like edibles and analyzes the amounts of tetrahydrocannabinol (THC), pesticides, heavy metals, and microbial pathogens they may contain. THC is the psychoactive compound found in the cannabis plant.

It is our hope that the study will yield results that MMERI can promote to further educate the public on safety concerns about unregulated THC-infused products, which are becoming more common in retail spaces while growing in popularity among minors. (See story, page 43.)

Being a credible source of information on cannabis is critical to our mission, which is why the MMERI team keeps up a busy pace all year long to engage people and educate them about Florida’s medical marijuana law and the risks of using illegal marijuana.

In the first quarter, our outreach and engagement team focused on participating in events that attracted Floridians from all backgrounds and offered opportunities to make new connections. Events kicking off the start of a new school year opened doors for us to engage FAMU and Tallahassee State College students and their parents, while a criminal justice training seminar allowed MMERI to interact with professionals in law enforcement and related fields. Face-to-face communication remains our most effective method for addressing misinformation about medical marijuana and sharing facts about Florida’s cannabis laws.

MMERI’s *Conversations on Cannabis* virtual forums continued to bolster our communications efforts, with monthly episodes tackling topics in the medical marijuana space. Our forums featured discussions with subject matter experts on sickle cell disease, a new law that could impact medical cannabis users and their registered caregivers, and workplace issues concerning marijuana use.

With a new fiscal year underway, the MMERI team is excited about the opportunities ahead to strengthen the program’s impact and reputation throughout Florida. ◀

MMERI Program Overview



Florida Agricultural & Mechanical University (FAMU) is ranked the number one public Historically Black College and University (HBCU) in the nation by U.S. News and World Report.

FAMU’s historic academic legacy is also evidenced in the following honors:

- Ranked in the Top 100 National Public Universities (U.S. News and World Report)
- Highly-Ranked University for Social Mobility (U.S. News & World Report)
- Ranked #1 HBCU for Online Excellence (Forbes Advisor)
- Top Producer of African American Degrees in Architecture, Engineering, Pharmacy/Pharmaceutical Sciences (Diverse Issues)
- Top HBCU Producer of African American Baccalaureate Degrees (Diverse Issues)
- Highly ranked as one of the Most Affordable Colleges in Florida (Colleges of Distinction)
- Fulbright HBCU Institutional Leader (U.S. Department of State)
- Among the Top HBCUs for STEM Majors (TheHundred-Seven.org)
- Highly-Ranked Most Innovative School (U.S. News & World Report)
- Top HBCU for Research and Development (National Science Foundation)

Given the University’s historical role in educating students, FAMU is uniquely positioned to educate Floridians about medical marijuana in accordance with its legislative mandate.

MISSION

To educate, inform, and engage Floridians about medical marijuana and the impact of the unlawful use of marijuana.

VISION

Florida A&M University (FAMU) is the catalyst for statewide education and outreach efforts that ensure Florida’s communities are knowledgeable about medical marijuana and the impact of the unlawful use of marijuana.

MMERI PROGRAM COMPONENTS



EDUCATION

Historically, FAMU has played an outstanding role in educating students. Therefore, it is in a unique position to educate Florida’s populations about medical marijuana and the impact of the unlawful use of marijuana while developing and delivering curriculum and certified training programs to increase knowledge and understanding of these subjects.



COMMUNITY ENGAGEMENT

Community engagement and education are integral parts of this initiative. To reach target populations, MMERI initiates activities, builds and expands relationships and partnerships, and collaborates with leaders, community groups, faith-based organizations, educational institutions, and others.



COMMUNICATIONS

Partnerships and collaborations with media outlets across Florida generate timely delivery and dissemination of relevant information to multigenerational and multilingual audiences. A statewide public education campaign includes digital, audio, visual, print, virtual, and in-person platforms to engage and inform key audiences and stakeholders.



PEDAGOGICAL RESEARCH

Through comprehensive research on cannabis, MMERI is gaining insights into the impact of medical marijuana. Outcomes should yield evidence-based approaches for guiding education and practices, and ensuring responsible and effective use of legal medical marijuana while discouraging unlawful use of marijuana across our great state.

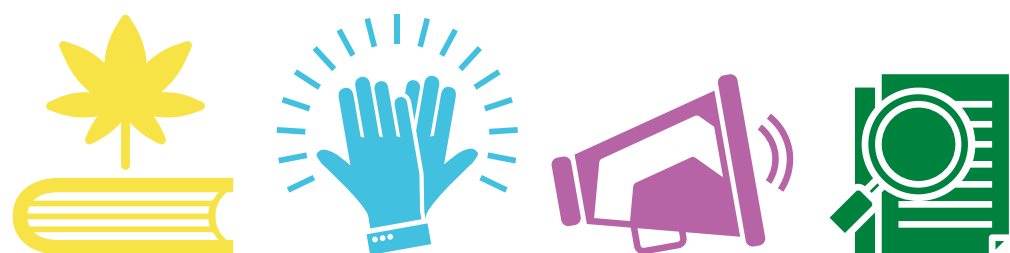
GOALS

Educate Florida’s communities about medical marijuana and the impact of the unlawful use of marijuana

Increase the body of research that promotes and advances knowledge about medical marijuana and the impact of the unlawful use of marijuana

Address challenges related to knowledge about medical marijuana in Florida, including legal use, treatment, safety, and law enforcement

9 EDUCATION
13 COMMUNITY ENGAGEMENT
27 COMMUNICATIONS
43 PEDAGOGICAL RESEARCH



FIRST QUARTER SNAPSHOT



EDUCATION

Florida A&M University is nationally recognized for its outstanding role in educating students. Through the Medical Marijuana Education and Research Initiative, the University plays a significant part in educating Floridians about medical marijuana and the impact of the unlawful use of marijuana.

The following pages show notable public education initiatives from the first quarter of Fiscal Year 2025-2026.



MMERI BY THE NUMBERS

40,000



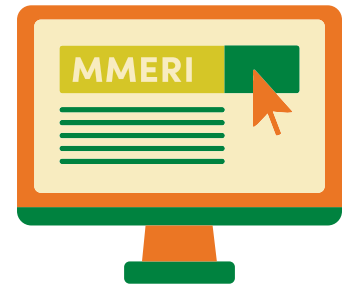
MMERI PUBLIC EDUCATION
WEBSITE VISITORS

Individuals who visited the Medical Marijuana Education and Research Initiative website from July through September

19,100

MMERI ON-DEMAND
SITE VISITORS

Individuals who visited the online and interactive public education platform from July through September



151

MMERI ON-DEMAND
SUBSCRIBER VIEWS

Number of views by MMERI On-Demand subscribers who visited MMERI's online and interactive public education platform modules from July through September

6

MMERI ON-DEMAND
SUBSCRIBERS

Individuals who visited and registered to MMERI's online and interactive public education platform from July through September



MMERI Scores Big Wins at Criminal Justice Conference



The Florida Council on Crime and Delinquency’s (FCCD) 95th annual Criminal Justice Training Institute yielded some big wins for FAMU’s Medical Marijuana Education and Research Initiative.

Most notable is our new partnership with the Florida Department of Juvenile Justice that will help us connect with at-risk youths and their parents and educate them on the potential health and safety issues and legal risks of unlawful marijuana use.

Our team also came away from the two-day conference with more than 190 leads stemming from meaningful

conversations with attendees. Additionally, several organizations expressed interest in partnering with MMERI in the near future.

The event provided MMERI with the opportunity to raise the program’s stature among the more than 400 criminal justice professionals in attendance. With that goal in mind, Deputy Executive Director Michelle Wilson (photo, left) and Statewide Program Outreach Coordinator Anthony Washington (below, left) delivered a well-received presentation that highlighted MMERI’s mission and emphasized the importance of safety and informed decision-making about cannabis use. They shared credible information that broadened attendees’ perspectives on cannabis and spurred constructive dialogue. Mr. Washington’s past experience as a probation officer and reserve deputy sheriff proved to be instrumental in making connections with attendees.

For more than 60 years, FCCD has sought to foster interagency collaboration among criminal justice entities, deliver relevant training, and promote community service throughout Florida. ◀



MMERI On-Demand Highlights

This quarter, four new On-Demand modules were added to the platform. The modules educate the public on the risks and challenges of unlawful cannabis use, take a deep dive into marijuana’s path to legalization, and explain how medical cannabis affects multiple sclerosis and menopause symptoms.

More than 50 modules cover a range of topics to educate Floridians and others interested in learning about cannabis.

New Modules Added This Quarter

- Risks of Unlawful Use (expansion)
- Menopause and Cannabis
- Cannabis and MS
- Florida Marijuana Laws (expansion)



IN THIS QUARTER

MORE THAN
19,100
VISITORS

ACCESSED MMERI ON-DEMAND.

24.22% IN MIAMI

17.16% IN ORLANDO

11.34% IN JACKSONVILLE





COMMUNITY ENGAGEMENT

This initiative positions MMERI to educate, learn, and talk about cannabis with Floridians across the state. To reach target populations, MMERI initiates activities, builds and expands relationships and partnerships, and collaborates with leaders, community groups, faith-based organizations, educational institutions, and others. These partnerships help raise MMERI’s profile as a trusted source of information and education about the state’s cannabis laws.



[Back to Table of Contents](#)

MMERI BY THE NUMBERS

1 MILLION ATTENDEES

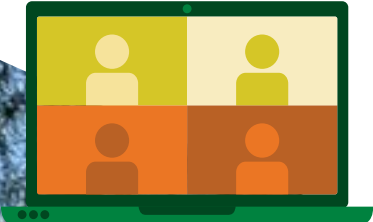
At community events and group meetings in cities and neighborhoods across the state



22 OUTREACH EVENTS

690 TOTAL VIEWS

3 CONVERSATIONS ON CANNABIS VIRTUAL FORUMS



Streamed live, these virtual forums reach audiences across Florida and engage them in discussions about medical marijuana and the impact of the unlawful use of marijuana

5,928 PARTICIPANTS

43 COMMUNITY ENGAGEMENTS

In collaboration with community partners and organizations



Outreach Events

MMERI On The Move

During the first quarter, the MMERI team leveraged partnerships with community-based organizations, business and industry associations, and the largest multimedia company in the United States to participate in events and programs that reached thousands of attendees. During these in-person and virtual events, team members engaged audience members and facilitated conversations about cannabis.

JULY 22 • ONLINE

Community Coalition Alliance, Inc. Group Collaboration

The Community Coalition Alliance holds online meetings and training sessions that bring together coalitions, community partners, and policymakers to advocate for healthy and safe environments across Florida. These virtual forums give participants an opportunity to share data and learn new drug-prevention strategies while staying connected with advocacy initiatives across the state.

By taking part in these virtual meetings, MMERI has been able to build new relationships and strengthen existing ones with community leaders and organizations. These meetings also give the team an opportunity to share our work and reinforce MMERI's role as a reliable source for clear, factual information about Florida's cannabis laws.



AUGUST 2 • TALLAHASSEE

DJ Demp Back 2 School Giveaway

MMERI participated in the DJ Demp Back 2 School Giveaway, an annual event hosted by a local radio personality and community advocate. More than 500 students received free backpacks and school supplies to prepare them for the start of the school year, and the event also offered families free books, clothing, hygiene products, snacks, and a variety of activities, including face painting and a bounce house.

The MMERI team engaged attendees and distributed educational materials and resources to raise awareness about marijuana education, emphasizing the risks of illicit use and promoting factual information to families. The event created meaningful connections with parents and caregivers, reinforcing MMERI's mission of community education and outreach.

AUGUST 9 • TALLAHASSEE

4th Annual All Things FAMU DRS Extravaganza

MMERI took part in the 4th Annual All Things FAMU DRS Extravaganza, which brought students, families, and the community together to celebrate education and get ready for the new school year. Held at the Florida A&M University Developmental Research School (DRS), the event showcased programs in college readiness, career exploration, sports, and STEM, while also giving away backpacks and supplies.

At the event, MMERI hosted an interactive table where the team spent the day talking with families and children about medical marijuana and the risks of illicit cannabis use. The event provided the MMERI team with an opportunity to introduce our mission to families, raise awareness about cannabis laws, and increase our visibility within the community.



AUGUST 15 • TALLAHASSEE

Tallahassee State College New Student Convocation/Orientation

The New Student Convocation at Tallahassee State College (TSC) presented MMERI with an opportunity to engage incoming students and their families. The event welcomed more than 2,000 first-year students and their families to the TSC campus. MMERI hosted a table where team members shared educational materials and met with students in open conversations about medical marijuana and the risks of unlawful cannabis use. For many students, this engagement was their first introduction to MMERI, sparking curiosity about the program’s role in providing unbiased, research-based information on cannabis and its impacts.



AUGUST 22 • TALLAHASSEE

FAMU Set Market Fridays

The MMERI team participated in Florida A&M University’s first Set Market Friday of the fall semester. Organized by the H. Manning Efferson Student Union and Activities office, the gathering transforms the campus into a lively hub where students, families, faculty, staff, and local residents come together to engage and explore resources.



While engaging students, the MMERI team addressed common misconceptions about medical cannabis. Our presence also reinforced MMERI’s mandate to educate and inform, while creating a space for open conversations with students navigating new experiences at the start of the new semester.



AUGUST 23 • QUINCY

Gadsden County Probation Helping Hands Initiative’s Community Job and Resource Fair

MMERI distributed educational materials and engaged attendees at the Gadsden County Probation Helping Hands Initiative’s Community Job and Resource Fair. Held at the Joe Ferolito Recreation Center, the event connected residents with job opportunities, health services, and family activities. Our team’s educational outreach at the event included sparking conversations about cannabis and health, and promoting informed decision-making regarding marijuana use and personal well-being.



AUGUST 23 • TALLAHASSEE

FAMU Grape Harvest Festival

The MMERI team was among 60 community vendors that participated in the Florida A&M University Grape Harvest Festival. Hosted by the Center for Viticulture and Small Fruit Research, the annual event acknowledges FAMU’s national leadership in grape research while celebrating food, family, and agricultural innovation. Approximately 1,000 people joined the festivities, many filling containers and pillowcases with freshly picked grapes straight from the vines. Guests also enjoyed the annual grape-stomping competition, vineyard trailer rides, hula hoop and grape-throwing contests, water slides, a health fair, and other activities.



Meanwhile, MMERI team members were busy engaging attendees in discussions about medical marijuana education and making them aware of our program offerings.



SEPTEMBER 8-10 • ORLANDO

Florida Council on Crime and Delinquency

MMERI participated in the Florida Council on Crime and Delinquency's (FCCD) 95th annual Criminal Justice Training Institute and educated attendees on the legal and social aspects of marijuana use. The conference brought together more than 400 professionals from Florida's law enforcement and criminal justice community. FCCD promotes collaboration across the justice system, provides quality training, and supports community service statewide.

The event gave MMERI a valuable chance to connect with police officers, sheriff's deputies, probation officers, and other trusted partners in public education, helping them understand how our team can support accurate marijuana education while discussing medical marijuana's legal applications and the consequences of illicit use. MMERI Deputy Executive Director Michelle Wilson introduced our program and highlighted our mission to raise awareness about marijuana and its impacts on Florida communities.





Community Engagement

MMERI Multilingual Street Teams Engage Floridians Where They Are

MMERI’s media and community outreach partners shared information about the MMERI program with populations across Florida.

Trained, multilingual street teams reached key audiences by visiting local establishments, including bars, clubs, churches, malls, train/bus stations, festivals, sports venues, and community events. At these venues, team members discussed legal and illegal marijuana uses with people from African American, Caribbean, Hispanic, American Indian/Native American, and Asian communities.

OUTREACH LOCATIONS

DURING THIS QUARTER, THE STREET TEAMS TOURED:

ORLANDO	OCALA
KISSIMMEE	LAKELAND
WINTER HAVEN	YBOR CITY
SOUTH TAMPA	BRANDON
RIVERVIEW	TAMPA
PLANTATION	SUNRISE
POMPANO	FORT LAUDERDALE
MARGATE	

MMERI’s Partner Network
Educates Floridians Where
They Are

Organizations in communities across the state recognize MMERI as a trusted leader in providing public education and information about cannabis. Through its expanding partner network, MMERI participated in or provided educational resources for the following engagements during the quarter.

7/9 • GREENVILLE, FL	200
Summer Community Event	
7/15 • MADISON, FL	60
Resource Fair at North Florida College	
7/19 • MADISON, FL	30
Pineland Missionary Baptist	
7/19 • MADISON, FL	75
Jefferson County Youth Athletic Camp	
7/25 • TALLAHASSEE, FL	62
Griffin Heights Community	
8/2 • MONTICELLO, FL	50
Back 2 School Giveaway	
8/9 • TALLAHASSEE, FL	150
Griffin Heights Community Resource Fair	

8/10 • MIDWAY, FL	65
One Gadsden Foundations 2025 Back 2 School Resource Fair Vendor	
8/23 • TALLAHASSEE, FL	150
FAMU Grape Festival	
8/23 • GREENVILLE, FL	50
Greenville Fresh Farmers Market	
8/26 • TALLAHASSEE, FL	36
YHL youth event	
8/27 • TALLAHASSEE, FL	25
Greenville Farmers Market	
8/27 • MIAMI GARDENS, FL	40
Transparent Conversations Class Presentation and Discussion at Florida Memorial University	
8/27 • MIAMI GARDENS, FL	53
Transparent Conversations Class Presentation and Discussion at Florida Memorial University	

8/28 • MIAMI GARDENS, FL	54
Transparent Conversations Class Presentation and Discussion at Florida Memorial University	
8/28 • MIAMI GARDENS, FL	16
Transparent Conversations Class Presentation and Discussion at Florida Memorial University	
9/16 • MIAMI GARDENS, FL	101
Transparent Conversations Class Presentation and Discussion at Florida Memorial University	
9/18 • MIAMI GARDENS, FL	70
Transparent Conversations Class Presentation and Discussion at Florida Memorial University	



Virtual Forums

Conversations on Cannabis Virtual Forum (July, August, September)

Conversations on Cannabis virtual forums invite viewers to engage program guests in discussions on medical marijuana and the impact of the unlawful use of marijuana. Livestreamed on Facebook and YouTube, each program features experts in fields such as health care, business, law enforcement, theology, and other professions.

IN THIS QUARTER

690 VIEWERS

TUNED IN TO THE CONVERSATIONS
ON CANNABIS VIRTUAL FORUMS ON
MMERI'S FACEBOOK AND YOUTUBE
PAGES THIS QUARTER.

JULY 24, 2025

Medical Cannabis in Sickle Cell Care

Sickle cell disease is an incurable genetic blood disorder that affects around 100,000 Americans, predominantly those of African ancestry, according to the Centers for Disease Control. The disease causes red blood cells to become sickle-shaped, creating a condition that can block blood flow to the rest of the body and deprive it of oxygen. Individuals with the condition often endure lifelong chronic pain and serious health complications, including shortness of breath, lung and eye problems, kidney disease, and stroke. Opioid narcotics are often prescribed to treat pain and suppress symptoms throughout patients' lives, but they pose the risk of respiratory depression and overdosing. A low-risk option for reducing inflammation, pain, anxiety, and sleep disturbances is medical marijuana, said sickle cell disease experts Drs. Lanetta Bronté-Hall and Anthony Hall. Dr. Hall, a medical marijuana qualified physician and board-certified neurosurgeon, also recommended using non-psychoactive cannabidiol (CBD) products to help

fight inflammation and reduce pain and stress. Retired board-certified pediatrician Dr. Alfreia Blackshear recommended adopting a healthy diet, avoiding stress, and maintaining a low-impact exercise routine to help mitigate the disease's ill effects.



AUGUST 28, 2025

New Law Could Affect Medical Marijuana Users

Medical marijuana patients should be aware of a new law signed by Governor Ron DeSantis, which is now in effect. Senate Bill 2514 calls for the immediate revocation of medical marijuana cards held by patients and caregivers if they are "convicted of, or pled guilty or nolo contendere to, regardless of adjudication, a violation of [Florida Statute] Chapter 893 if such violation was for trafficking in, the sale, manufacture, or delivery of, or possession with intent to sell, manufacture, or deliver a controlled substance." Sha'Ron James, a Tallahassee-based lawyer and lobbyist with expertise in healthcare and cannabis policies, explained that "a simple possession [of illicit marijuana] would not fit the scope of this particular law." She said it will be up to the Florida Department of Health, which includes the Office of Medical Marijuana Use, to enforce the law as it pertains to medical marijuana users and registered

caregivers. Currently, she added, there isn't a process in place for notifying cardholders or registered caregivers that their medical marijuana ID registrations have been revoked for Chapter 893 violations.



SEPTEMBER 25, 2025

Medical Cannabis in the Workplace

In 2019, a Hillsborough County fire department paramedic was placed on unpaid leave after testing positive for cannabis use, which he claimed had occurred while off duty and was a medical marijuana treatment for job-related post-traumatic stress disorder. The paramedic sued, alleging disability discrimination under Florida's Civil Rights Act (FCRA). The court ruled in his favor, saying the paramedic was a qualified individual with a disability under the FCRA, and the county should have provided him with reasonable accommodation. The case brought to the forefront the evolving complexities of managing workplace drug policies when medical cannabis use is legal. Human resource (HR) experts note employers can still prohibit on-duty use, especially if impairment affects safety or performance. Public employers continue to voice concerns about how to maneuver employer liability, workplace safety, and reasonable accommodations. HR professional Cheryl Brown Merriwether, vice president and executive director of the Net Institute Center for Addiction and Recovery

Education, emphasized that "HR practitioners have to be intentional about reviewing their policies and recognizing that this is a constantly evolving landscape." Nick Hartman, co-founder of the Drug Screening Compliance Institute, recommended employers set clear policies for maintaining workplace safety and staff support.





COMMUNICATIONS

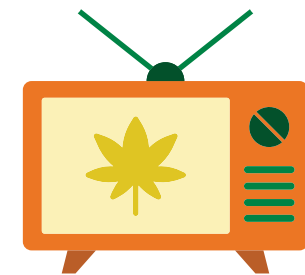
MMERI leverages multiple media platforms to provide Floridians with factual information on the state’s medical marijuana law and the potential consequences of the unlawful use of marijuana. A comprehensive communications strategy supports and promotes MMERI’s education and community engagement activities. This holistic approach to public education has established Florida A&M University as a leading authority on medical marijuana and a trusted resource on the legal and illegal uses of marijuana.

MMERI BY THE NUMBERS



10.7 MILLION RADIO SPOTS
Aired in 10 major media markets

83 MILLION IMPRESSIONS



18,845 TELEVISION SPOTS
Aired in 10 major media markets

1.6 MILLION IMPRESSIONS

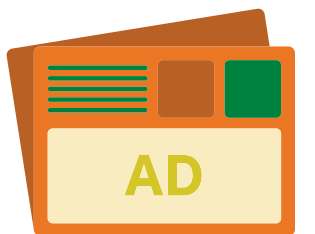
4.3 MILLION IMPRESSIONS

9 E-NEWSLETTERS (ENGLISH/SPANISH)
Sent monthly to provide timely information about MMERI programs and initiatives



6.9 MILLION IMPRESSIONS

113 PRINT ADVERTISEMENTS
Published in 23 Media News & Magazine Outlets



6.9 MILLION IMPRESSIONS

71 NEWS ARTICLE PLACEMENTS
Published in 23 Media Print Newspapers



1 MILLION+ PROMO ITEMS

3 STATEWIDE CAMPAIGNS
Addressed various cannabis-related topics with subject matter experts and Florida communities

MMERI Campaigns Get Floridians Talking and Learning About Cannabis

During the first quarter, MMERI launched three new campaigns about marijuana use — a topic many people are reluctant to discuss in public. These campaigns began with the monthly *Conversations on Cannabis* live virtual forums that prompted an open dialogue about cannabis-related topics, including Florida’s marijuana laws and the newest one potentially impacting medical marijuana users, and using cannabis to relieve sickle cell disease symptoms. Forum discussions featured knowledgeable guests and interactions with virtual audience members.

MMERI expanded the campaigns’ reach by leveraging partnerships with large media groups and media outlets across the state. These partners used multiple media channels—traditional, digital, and social media—to deliver information and resources to Floridians in English, Spanish, and Haitian Creole. ◀



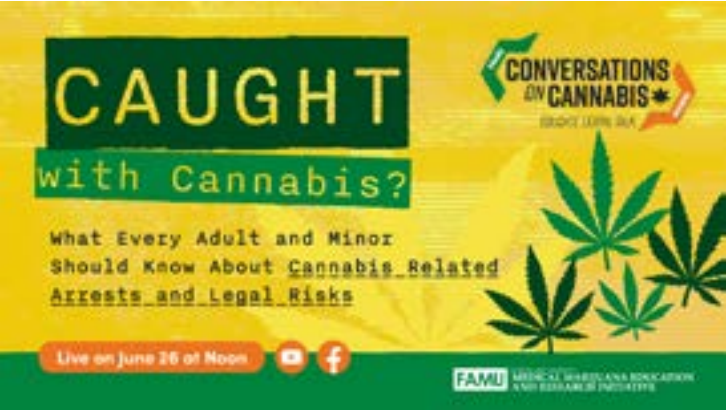
JULY

Clearing the Smoke About Florida’s Marijuana Laws

Cannabis law experts offer advice on avoiding potential conflicts with police

In the July campaign, two experts in marijuana law addressed the possible consequences of using marijuana in violation of state and federal laws. Attorneys Mutaqee Akbar and David Cannady both strongly advised against smoking marijuana, even legally obtained medical cannabis, in public because the unmistakable odor of burning cannabis could draw the attention of police. They added that the scent of marijuana coming from cars constitutes probable cause for police to conduct traffic stops that could lead to vehicle searches for more serious crimes, such as drug trafficking. But after the state legalized medical marijuana, the Florida Highway Patrol decided that the smell of cannabis alone wasn’t sufficient to justify probable cause for a vehicle search. Additional circumstances must be present for troopers to launch a search. The attorneys also suggested keeping medical cannabis products in original packaging to avoid suspicion of carrying illicit marijuana.

In Florida, recreational marijuana is illegal, with possession of 20 grams or less being a first-degree misdemeanor punishable by up to a year in jail, a \$1,000 fine, and a six-month driver’s license suspension. Possession or distribution of more than 20 grams is a felony, with penalties increasing based on quantity. Meanwhile, some cities and counties issue civil citations or low fines for possession of 20 grams or less. The legal landscape of cannabis can be confusing in a state that allows its medical use but prohibits recreational use, while federal law bans marijuana for any purpose.



“I see a lot of police reports where the probable cause to search the car starts from the smell of marijuana. And, honestly, law enforcement is not looking for marijuana.”

Mutaqee Akbar
Founder of Akbar Thomas Law Firm



“Even though you have a [medical cannabis card], you are stress testing the federal system and the [Transportation Safety Administration] by having any of your stuff in your bag.”

David Cannady
Senior Partner, Cannady & Associates



Cannabis ‘Holds Promise’ as Sickle Cell Treatment

Three doctors share their expertise in treating this incurable genetic blood disorder

Sickle cell disease is an incurable, rare genetic blood disorder that affects around 100,000 Americans, almost all of African descent. In the August campaign, three medical experts discussed symptoms of sickle cell disease and possible treatments, including the use of medical marijuana. Individuals with the condition often endure lifelong chronic pain and serious health complications, including shortness of breath, lung and vision problems, kidney disease, and stroke. Infants with the disease are usually treated with penicillin from age three months for at least five years to prevent life-threatening infections like pneumonia, said Dr. Alfreda Blackshear, a retired board-certified pediatrician.

Medical marijuana qualified physician Dr. Anthony Hall, a board-certified neurosurgeon, said medications, including opioid narcotics, are often prescribed to treat pain and suppress symptoms throughout patients’ lives. Because medical marijuana has been proven to be effective at reducing inflammation, Dr. Hall said it can be used as an alternative drug for managing pain caused by sickle cell symptoms. He added that non-psychoactive cannabidiol (CBD) products also help fight inflammation, reducing pain and stress, and they’re available in retail stores. Dr. Lanetta Bronté-Hall, president and CEO of the Foundation for Sickle Cell Disease Research, supported the use of medical cannabis as a treatment, saying it could help “slow down the progression of organ damage, because we are tackling that stress through cannabis and some of its components such as CBD and CBG.”



“You can live decades and decades, well into your 60s and 70s with good care.”

Dr. Anthony Hall
Medical Marijuana Qualified Physician



“Cannabis holds a lot of promise in addressing the hallmarks of sickle cell disease, which are chronic pain, acute pain, sleep disturbances, and anxiety.”

Dr. Lanetta Bronté-Hall
President and CEO of the Foundation for Sickle Cell Disease Research



“A lot of [pediatric] sickle cell patients know their limitations, but they won’t follow them.”

Dr. Alfreda Blackshear
Retired Board-Certified Pediatrician



How New Law Could Impact Medical Marijuana Patients

Attorney breaks down who could lose access and why

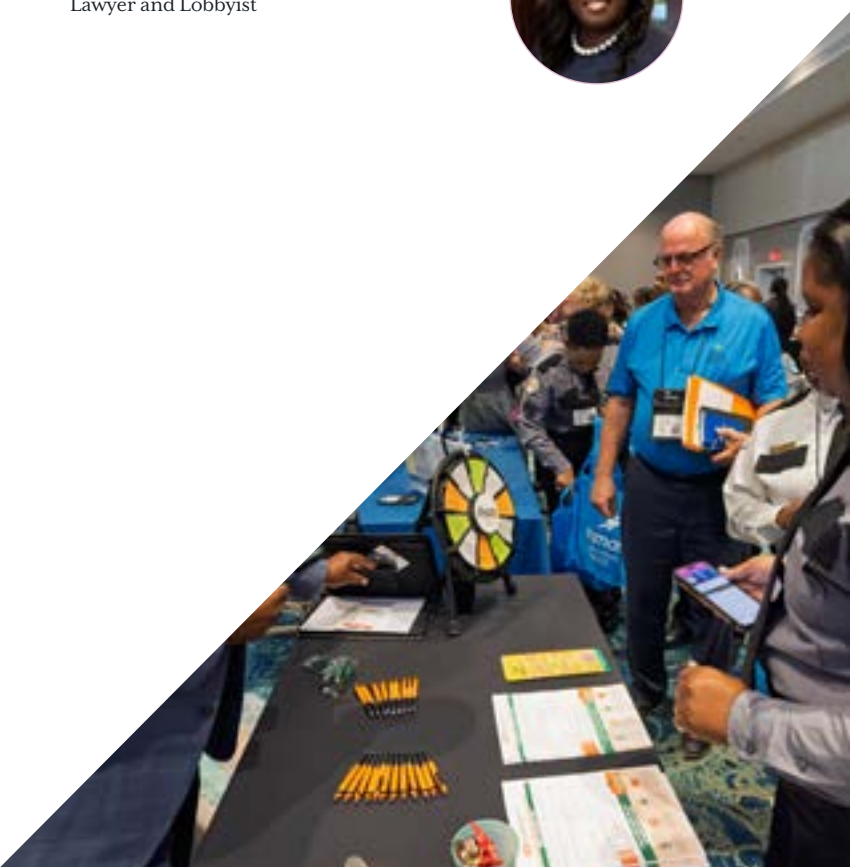
The September campaign sought to raise awareness among medical marijuana patients of a new law that went into effect on July 1, 2025. Senate Bill 2514, a broad Health and Human Services appropriations measure, introduces the prospect of immediately losing legal cannabis healthcare when convicted of involvement in illegal drug activity. The law states that the Florida Department of Health (FDOH) must revoke the registration of a qualified patient or caregiver “convicted of, or pled guilty or nolo contendere to, regardless of adjudication, a violation of [Florida Statute] Chapter 893 if such violation was for trafficking in, the sale, manufacture, or delivery of, or possession with intent to sell, manufacture, or deliver a controlled substance.”

Sha’Ron James, a Tallahassee-based lawyer and lobbyist with expertise in healthcare and cannabis policies, said enforcement of the law is up to FDOH, which includes the Office of Medical Marijuana Use (OMMU). OMMU issues medical marijuana registration cards to patients with qualifying conditions for treatment and their caregivers. More than 920,000 full- or part-time Florida residents currently hold active medical cannabis ID cards. She added that there isn’t a process in place for notifying cardholders or registered caregivers that their medical marijuana ID registrations have been revoked for Chapter 893 violations, and it’s unclear whether a suspension will be reported to medical marijuana qualified physicians and cannabis dispensaries. This law could lead to a reduction in the number of medical marijuana ID holders, potentially impacting physicians and dispensaries in the cannabis industry.



“Under the new law, if you have one of the related convictions, it’s an automatic revocation of the [medical marijuana] registration. You would not be able to seek reinstatement until after your probation is completed.”

Sha’Ron James
Lawyer and Lobbyist



The following media and communications channels delivered campaign information and public education to Floridians statewide.



E-Newsletters

Maintaining Constant Contact with Audiences Through News on Marijuana in Florida and Across the Country

Consumer-focused e-newsletters and e-blasts with educational information about cannabis are distributed monthly in English and Spanish. *Conversations on Cannabis* e-newsletters highlight monthly campaign subject matter expert(s) talking about an issue or concern, feature the latest marijuana news in Florida and across the country, and include sections on Florida's cannabis laws and how to obtain a medical marijuana card legally. MMERI has recorded increased e-newsletter recipients, noticeable audience engagement, and positive feedback from stakeholders.



Radio

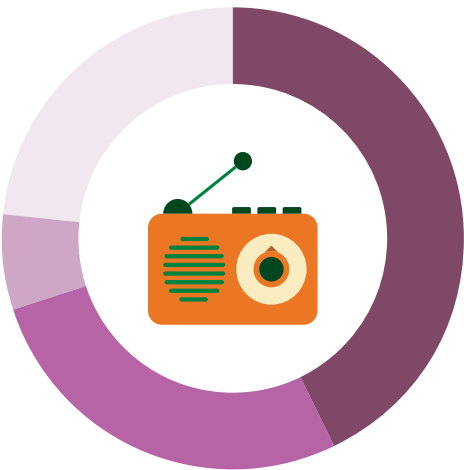
Radio commercials on mainstream stations

MMERI coordinated the placement of paid content and advertisements on mainstream radio stations. Several stations in cities across Florida also aired audio recordings of the Conversations on Cannabis virtual forums.

This quarter, radio advertisements and the monthly forums were played on the following stations:



RADIO AUDIENCE DEMOGRAPHICS



42.78% BLACK

27.32% HISPANIC

6.67% ASIAN

23.23% OTHER/MIXED

Radio Broadcast Schedule for Conversations on Cannabis Forums

SATURDAY

6 a.m. – 6:30 a.m.	West Palm Beach and the Treasure Coast WZZR-FM (Real Radio)
6 a.m. – 7 a.m.	Orlando WTKS-FM HD2 (104.5 The Beat)
7 a.m. – 7:30 a.m.	Tallahassee-Panama City WTLY-AM (Throwback 96.5 FM)
7 a.m. – 8 a.m.	West Palm Beach WZZR-FM HD2 (The New 93.3)
10 a.m. – 11 a.m.	Punta Gorda WCCF-AM (News Radio 1580)
6 p.m. – 7 p.m.	Melbourne-Titusville-Cocoa WMMB-AM (92.7 FM and 1240 AM and 1350 AM)

SUNDAY

1 a.m. – 2 a.m.	Miami WMIB-FM HD2 (Throwback 105.5)
6 a.m. – 7 a.m.	Jacksonville WFXJ-AM (930 Talk-Spanish)
6 a.m. – 7 a.m.	Jacksonville WKSL-FM HD2 (97.3 Talk-Spanish)
11 a.m. – 12 p.m.	West Palm Beach and the Treasure Coast WZZR-FM (92.1 Real Radio)
7 a.m. – 12 p.m.	Treasure Coast WCZR-FM (101.7 Real Radio)

“Best of MMERI Radio” shows also air on the following stations:

- WBTP-FM (95.7 The Beat) in Tampa-St. Petersburg
- WBTT-FM (105.5 The Beat) in Fort Myers
- WSDV-FM (103.9 Kiss FM) in Sarasota

MMERI Podcasts

MMERI Radio Forums, *Conversations on Cannabis* videocast, and virtual forums are featured as podcasts on the web and mobile devices.

Download the Podcasts
mmeri.famu.edu/podcasts

Print Ads and News Articles

Newspaper Outreach

To promote its public education programs and monthly campaigns, MMERI coordinates the placement of paid content and advertisements in newspapers targeting Black and Hispanic communities. This quarter, ads and editorial content were published in printed newspapers, posted on their news websites and social media platforms, and shared with their e-newsletter subscribers.

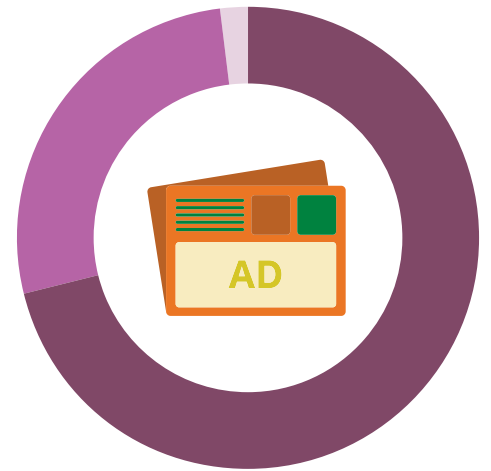


Magazine Outreach

MMERI engaged top lifestyle magazines targeting Floridians during the first quarter. Caribbean Today Magazine and Onyx Magazine have a readership primarily from Black and Caribbean communities across South Florida.



PRINT AUDIENCE IMPRESSIONS*



71.99%	BLACK
27.43%	HISPANIC
1.81%	ASIAN

*Data Sources: Circulation estimates provided by the newspaper publishers and staff

Television

Television Commercials

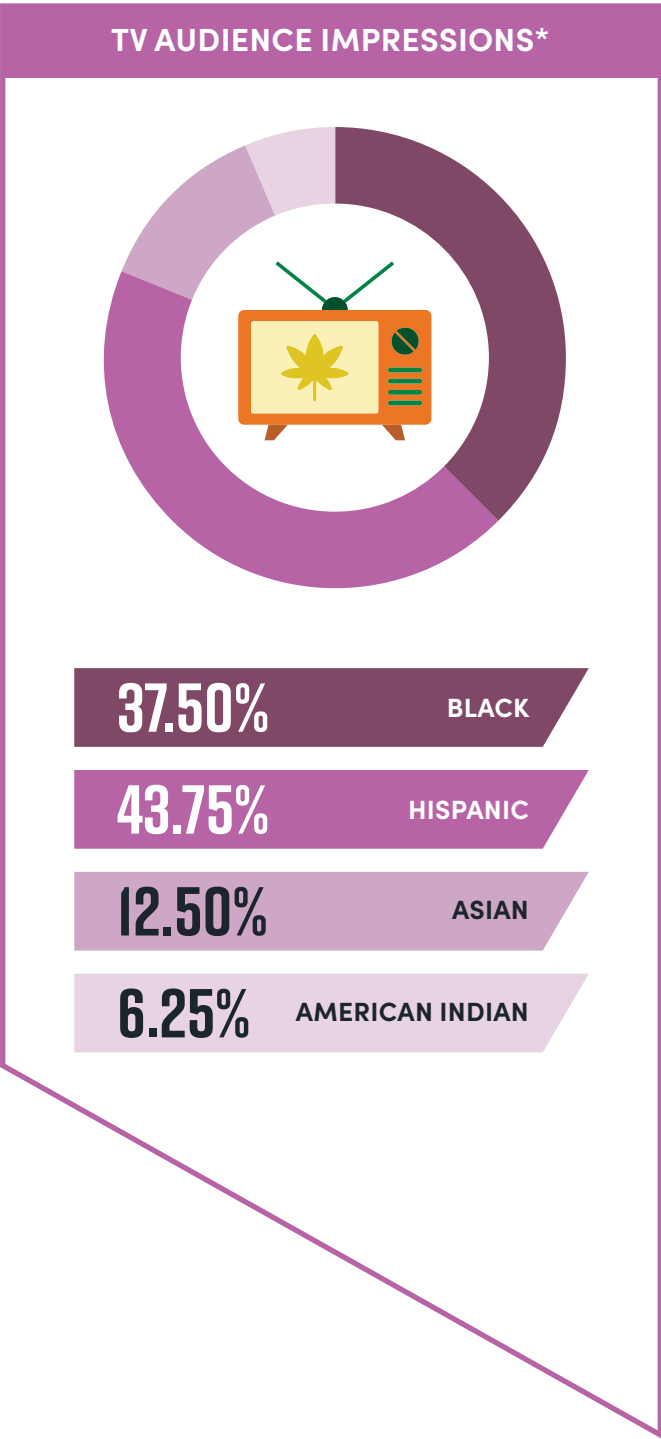
Television commercials blanketed the state’s airwaves with information about the MMERI program, monthly campaign topics, and public education related to medical marijuana and the impact of the unlawful use of marijuana.

During the quarter, MMERI commercials aired during 205 television programs in 10 major media markets across Florida:

- Fort Myers–Naples
- Gainesville–Ocala
- Jacksonville
- Miami–Fort Lauderdale
- Orlando–Daytona Beach–Melbourne
- Panama City
- Pensacola
- Tallahassee
- Tampa–St. Petersburg–Sarasota
- West Palm–Fort Pierce

The estimated potential television reach statewide from July through September 2025 was over 1.6 million viewers.

Of those estimated television viewers, 469,864 were African American; 548,175 Hispanic; 313,243 White; 156,621 Asian; 78,311 American Indian.



**Data provided by MMERI partners*

Promotional Campaigns

Statewide Promotion and Special Events By MMERI Partners

To promote its public education programs and monthly campaigns, MMERI coordinates the placement of paid content and advertisements in newspapers targeting Black and Hispanic communities. This quarter, ads and editorial content were published in printed newspapers, posted on their news websites and social media platforms, and shared with their e-newsletter subscribers.

JULY EVENTS

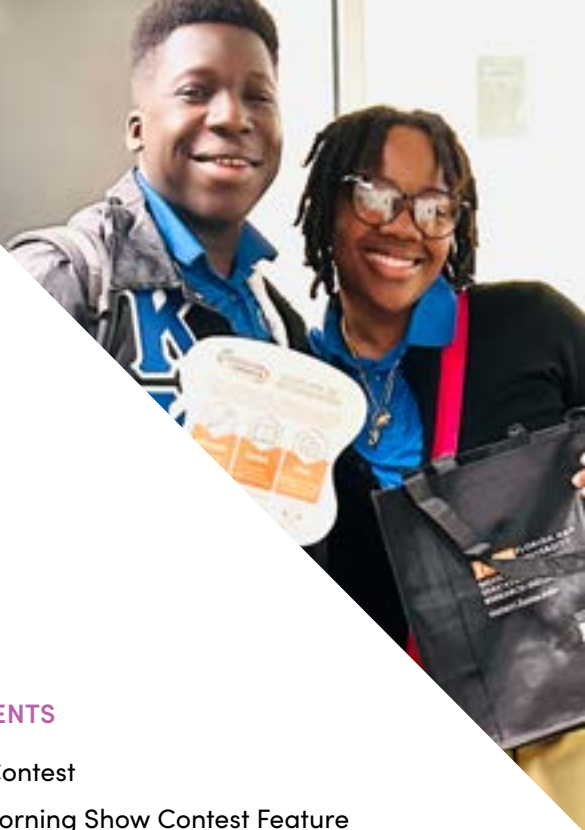
- Treasure Coast Songwriters Festival
- Q3 Cash Contest
- Enrique Morning Show Contest Feature
- The Breakfast Club Show Feature
- Local Clout Sponsorship
- BIN (Black Information Network)
- TTWN Promotion
- Live Forum Awareness Campaign
- Black Effect Podcast

AUGUST EVENTS

- Q3 Cash Contest
- Enrique Morning Show Contest Feature
- The Breakfast Club Show Feature
- Local Clout Sponsorship
- BIN (Black Information Network)
- TTWN Promotion
- Live Forum Awareness Campaign

SEPTEMBER EVENTS

- iHeartRadio Music Festival
- Fiesta Latina
- Q3 Cash Contest
- Enrique Morning Show Contest Feature
- The Breakfast Club Show Feature
- Local Clout Sponsorship
- BIN (Black Information Network)
- TTWN Promotion
- Live Forum Awareness Campaign



Audience Reach & Engagement in the First Quarter

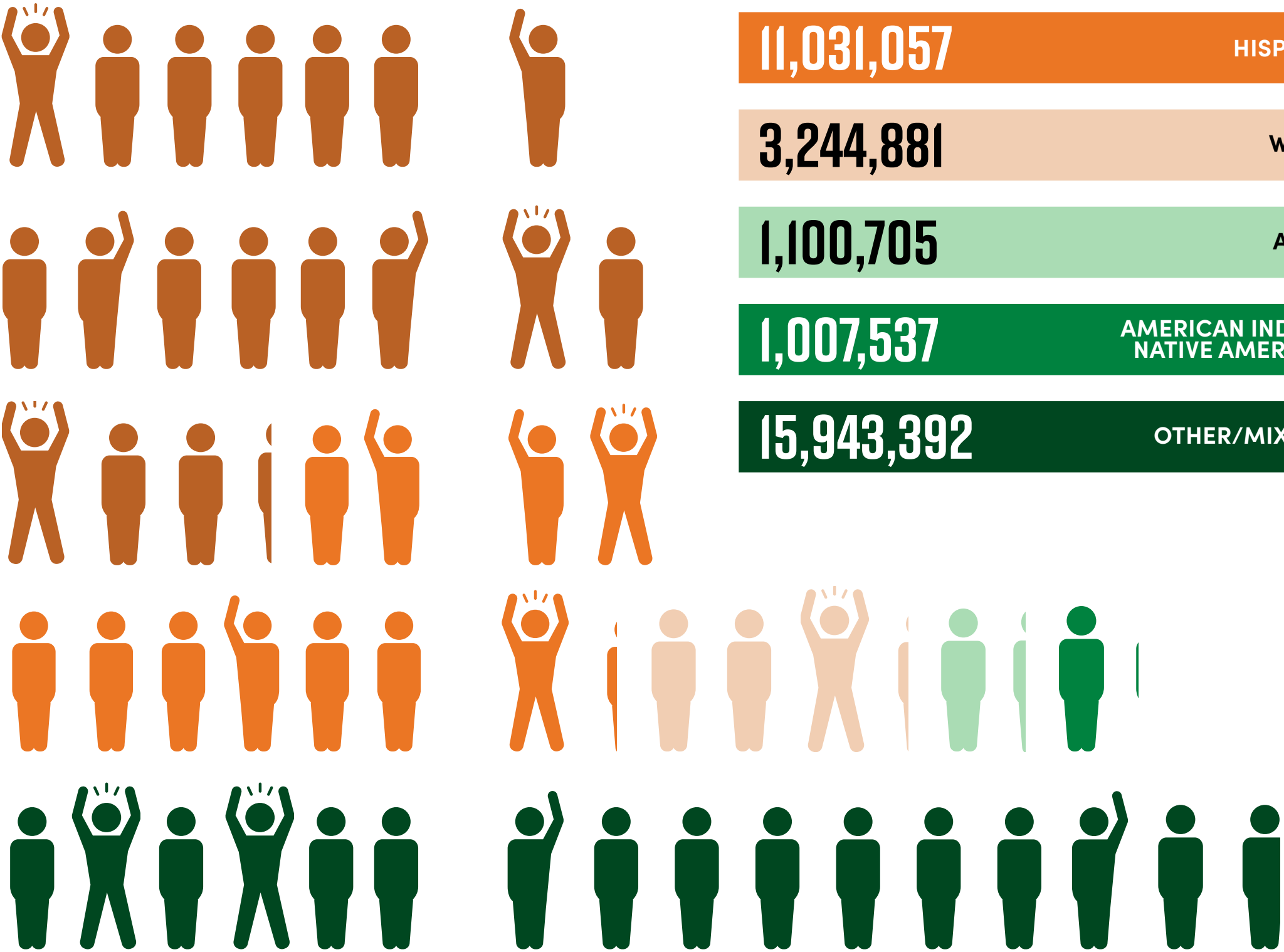
The following data represents the estimated* aggregated audience reach by demographics through public education programs, multimedia channels, engagement activities, and other communication tactics in the first quarter of FY 2025-2026.

Aggregated data of audiences reached and engaged were compiled from the following public education programs, multimedia channels, engagement activities, and other communication tactics:

- Online Education Surveys and Assessments
- Community Outreach
- Television Outreach
- Radio Outreach
- Print Outreach
- Digital Media Outreach
- Social Media Outreach

*Estimated total impressions based on data collected by MMERI staff and provided by program partners, media outlets and vendors

**Mixed/Other is defined as people of two or more races.





PEDAGOGICAL RESEARCH

MMERI is working with researchers conducting a comprehensive survey to evaluate over-the-counter cannabis products, focusing on their prevalence, consumer ratings, and relevance to public health. Our assessment will examine the physical characteristics, stability, and pharmacological properties of selected cannabis products, with particular emphasis on contaminants, variations in potency, and potential medication interactions. We will present the data in an educational format tailored for students, healthcare professionals, and the general public to enhance health literacy and promote community engagement.



Medical Marijuana and Unregulated THC Products

In the interest of broadening the program's educational scope, MMERI launched a collaborative effort with Florida A&M University researchers in the first quarter to study unregulated cannabis-related products commonly found in retail spaces. This research initiative will help MMERI better inform Florida communities about the health and safety risks these off-the-shelf products may pose.

Under the direction of Principal Investigator Dr. Mandip Sachdeva (photo, left), a professor and section leader of pharmaceuticals in the FAMU College of Pharmacy, this study will seek to confirm the risks and/or benefits associated with using unregulated products containing tetrahydrocannabinol (THC), the psychoactive compound found in the cannabis plant. Additionally, data from the study will help MMERI enhance the program's mandate to educate the public on the legal and illegal uses of cannabis in Florida while also raising awareness of safety and health concerns over unregulated products.

Drs. Sachdeva and Arvind Bagde, a co-investigator on the study and a postdoctoral research associate, state that unregulated THC-infused products pose



critical issues with dosage consistency, product quality, and public understanding of their risks and benefits. Their findings will help bridge gaps through research and education, with MMERI leveraging study conclusions to empower communities to make informed decisions about cannabis-related products that are available to consumers.

Research findings during the quarter showed that a specific brand of cannabis-infused gummies contained a higher concentration of cannabidiol (CBD) than stated on the label, exceeding the allowable range of 90–110% as per the new U.S. Pharmacopeia (USP) monograph guidelines. These findings highlight important labeling accuracy and compliance concerns in the commercial CBD market, raising fears of potential harmful effects on personal well-being.

In the second quarter, the researchers intend to re-conduct the study to confirm these results and assess batch-to-batch consistency, strengthening the study's formulation and quality assessment objectives.

The study's conclusions will inform MMERI's approach to implementing a wide-ranging outreach strategy to educate communities on the potential health and safety issues of using products sold on the unregulated cannabis market. ◀



APPENDIX

APPENDIX A

MMERI Oversight and Compliance Workgroup

Role and Members

The MMERI Oversight and Compliance Workgroup was formed in 2019 and charged with a mandate to monitor four key areas of the Medical Marijuana Education and Research Initiative:

- 1. Fiscal Affairs/Reconciliation
- 2. Achievement of Project Goals and Fulfillment of Mission
- 3. Impact and Assessment
- 4. General Compliance

The panel includes members of FAMU faculty and staff and is led by the Principal Investigator of MMERI, Charles Weatherford, Ph.D., Vice President for Research, Professor of Physics and Director of the Center for Plasma Science and Technology. The workgroup meets periodically.

Workgroup Members

Herbert Bailey Associate Vice President for Fiscal Management and Chief of Staff for Academic Affairs
Pamela Blount Director, Contracts & Grants, Division of Research
Gloria Spradley-Brown Director, Office of Sponsored Programs, Division of Research
Rica Calhoun Chief Compliance and Ethics Officer, Office of Compliance and Ethics
Marixcia Chrishon-Jones, Ph.D. Contract Manager, MMERI
Donald Palm, Ph.D. Executive Vice President for Health Sciences Enterprise and Research Innovation (EVP-HSERI)
David Self, Esquire Associate General Counsel
GP Mendie Assistant Vice President for Research and Executive Director for MMERI
Charles Weatherford, Ph.D. Principal Investigator of MMERI, Vice President for Research, Professor of Physics and Director of Center for Plasma Science and Technology
Michelle Wilson Deputy Executive Director, MMERI

APPENDIX B

Directory of Community Engagement and Outreach Partner Groups

(faith-based, law enforcement, colleges and universities, community-based organizations, health organizations, etc.)

- 1. Abbott
- 2. Accountable Drug Testing Services
- 3. Advent Christian Village at Dowling Park
- 4. Affordable Care Clinics
- 5. African American Research Library and Cultural Center
- 6. AgeVital Wellness
- 7. Akbar Law Firm
- 8. All Access CBD LABS
- 9. Allied Universal EM
- 10. Alpha Kappa Alpha Sorority, Inc./ Delta Iota Omega Chapter
- 11. Alzheimer's Project, Inc.
- 12. Arial II
- 13. AshCreek Financial Advisors
- 14. Association of Blind Services Florida
- 15. Association of Pretrial Professionals of Florida
- 16. Ask Doctor Lyn
- 17. Athletes for CARE
- 18. Apalachee Center
- 19. Axxcess Pharmacy
- 20. Aza Health
- 21. Baptist Healthcare
- 22. Barrineau Park Community Center
- 23. Barrineau Park Historical Society
- 24. Bay County Parkinson Support Group
- 25. Bebe's Bail Bonds
- 26. Bernard Cannabis Center
- 27. Beson4
- 28. Big Bend AHEC
- 29. Big Bend SHRM
- 30. Black Enterprise
- 31. Black Farmers and Agriculturalists of Florida
- 32. Black Professionals Network
- 33. Boys & Girls Club Northeast Florida
- 34. Broward College
- 35. Brownsville Community Resource Center
- 36. Brinson Family Medicine
- 37. Butterfly Life Journeys, Inc.
- 38. Caldwell Everson PLLC
- 39. Canna Moms
- 40. Cannabis Nurses of Color
- 41. Cannabiziac
- 42. Cannady and Associates, PLLC
- 43. Cantonment Family Medicine
- 44. Cantonment Improvement Committee
- 45. Capital Pediatrics
- 46. Carver Heights Senior Center
- 47. CDAC Behavioral Healthcare, Inc.
- 48. Central Florida Urban League
- 49. Century Village Pembroke Pines
- 50. Chesapeake Energy
- 51. Chinese Association of Tallahassee

- 52. City of Belleview
- 53. City of McAllen Risk Management
- 54. City of Miami Gardens
- 55. City of Palm Bay
- 56. Climate First Bank
- 57. Color Street
- 58. Color of Wellness Magazine
- 59. Cognitive Big Data Systems
- 60. Collier County Sheriff
- 61. Comcast
- 62. CommonSense
- 63. Community Action Program Committee, Inc. (CAPC)
- 64. Community Healthcare Northwest Florida
- 65. Community Health Outreach
- 66. Community Pharmacy Ormand Beach
- 67. Comprehensive Health Center
- 68. CORE DC
- 69. C.O.P.E – Caring for Our People in Emergencies
- 70. Crawfordville Lions Club
- 71. Curaleaf
- 72. CVS Pharmacy
- 73. Danzy Bail Bonds
- 74. Darius “Doc D” Baker
- 75. D.A.R.E.
- 76. Darrin Thomas, President (Thomas Media)
- 77. Dawn Powell, Life, Health Consultant
- 78. Daytona Police Department
- 79. DeKalb Medical Center
- 80. Defense Diagnostics
- 81. DISA- Drug Testing
- 82. Dixie County Anti-Drug Coalition
- 83. Drone 360 Solutions
- 84. Drug and Alcohol Testing Industry Association
- 85. Dr. Annabelle Manalo-Morgan (Author)
- 86. Dr. Kyron Tamar
- 87. Gadsden County Department of Elder Affairs
- 88. Dr. Marilyn Huestis, Toxicologist
- 89. Dr.Miriam Mandel, Pediatric Wellness Coach
- 90. Dr. Thomas Marcotte, Professor of Psychiatry Co-Director, Center for Medicinal Cannabis Research at UC San Diego
- 91. E&M Medical
- 92. Earl Britt, MD
- 93. ECAT – Transit Marketing
- 94. Economy Drug Store
- 95. Edward Waters College
- 96. Equal Employment Opportunity Commission
- 97. Efficient Edge HR Services
- 98. Ellen Grizzle, PhD
- 99. EliteBusiness Strategies
- 100. Empathetic Practice
- 101. Emerald Scientific
- 102. Enthused Cannabinoid Infusions
- 103. Epiphany Life
- 104. Escambia County Commission
- 105. Escambia County Neighborhood and Human Services Department
- 106. Escambia County Sheriff’s Office
- 107. Ethos
- 108. Evans Center, Inc.
- 109. Faith Health Network

- 110. Families First Network of Lakeview
- 111. FAMU National Alumni Association
- 112. FAMU Industrial Hemp Research Pilot Program
- 113. Fields Law
- 114. First Baptist Church of Piney Grove
- 115. First West Florida Baptist District Association
- 116. Climate First Bank
- 117. Florida Association of Community Action
- 118. Florida Cannabis Action Network
- 119. Florida Commission on Offender Review
- 120. Florida Council on Crime and Delinquency
- 121. Florida Department of Corrections
- 122. Florida Department of Juvenile Justice
- 123. Florida Department of Health HIV Division area 2B
- 124. Florida For Care
- 125. Florida International University
- 126. Florida Medical Marijuana Physicians Association (FLMMPA)
- 127. Florida Rights Restoration Coalition
- 128. Florida Sheriff’s Association Greater Tampa Bay Area
- 129. Florida/USVI Poison Information Center - Jacksonville
- 130. FOODESFEST
- 131. Gadsden County Health Council
- 132. Gadsden County Health Department
- 133. Gadsden County Juvenile Delinquency Court
- 134. Gadsden County Sheriff’s Office
- 135. Grassroots Leadership
- 136. Grassroots Wellness
- 137. Greater Frenchtown Revitalization Council
- 138. Greater Little Rock Baptist Church
- 139. Green Enterprise
- 140. Green Source
- 141. Green Thumb Industries (GTI)
- 142. Gulf Coast Minority Chamber of Commerce
- 143. Gumbs Media Group
- 144. Guardians Credit Union
- 145. Gunster Law Firm
- 146. Harvard Medical School
- 147. Health and Wellness Centers of North Florida
- 148. Heart Community Capital
- 149. HELIO
- 150. Hemp Up Caring
- 151. HempLade Vegan Café
- 152. Hernando County Sheriff’s Office
- 153. Herve Damas, MD, MBA
- 154. Hillsborough County Public Schools
- 155. Hispanic Federation
- 156. Hispanic Services Council
- 157. Hispanic Unity of Florida
- 158. Honorable Dr. Henry Lowe, PhD
- 159. Hound Labs
- 160. Hourly Medical Consulting Geriatric & Family Medicine
- 161. Howell Buchan & Strong Attorneys at Law
- 162. InCare Integrated Medical Care
- 163. Indivior Overdose Reversal Sciences
- 164. Infinity Protection Service, Inc
- 165. InterCultural Advocacy Institute
- 166. International Co-responder Alliance
- 167. Jacksonville Sheriff’s Office

- 168. Jean Gary Joseph, MD, Acupuncture and Oriental Medicine
- 169. Jeffrey Block, MD
- 170. Jefferson County Senior Center
- 171. John Reeves Photography
- 172. JQuad Multimedia
- 173. Judge Gayle Knachtigal (ret.), Circuit Judge in Washington County, Oregon
- 174. Kitchen Toke Media & Red Belly Honey
- 175. Lakeview Center
- 176. Latino Leadership
- 177. Lauderhill Police Department
- 178. Lauderhill Towne Center Library
- 179. Leafwell
- 180. Leo Bridgewater, Veteran
- 181. Leon County Parks, Recreation, and Neighborhood Affair
- 182. Leon County Sheriff’s Office
- 183. Leon County Urban League
- 184. Letresia Wilson, MD
- 185. Lighthouse of the Big Bend
- 186. Lighthouse Foundation, Inc.
- 187. Liquid Soul
- 188. Live Tampa Bay
- 189. LULAC Florida
- 190. Macedonia Missionary Baptist Church
- 191. Madison County Human Services Center
- 192. Malik Yoba
- 193. MARC Service
- 194. Marijuana Matters
- 195. Marthe Brun, Community Member
- 196. Max-Olivier Carre, Naturalist
- 197. Medical Marijuana Treatment Clinics of Florida
- 198. Medicus Cannabus
- 199. Med7, LLC
- 200. Melbourne Police Department
- 201. MIA Media Group LLC
- 202. Miami-Dade County Community Advocacy
- 203. Miami-Dade Police Department
- 204. Midway Horseman Association
- 205. Mimose Hyppolite, Community Member
- 206. Miracle Hill Nursing
- 207. Miramar Library
- 208. Modern Woodmen Fraternal
- 209. Morning Star Baptist Church
- 210. Most Worshipful Union Grand Lodge (Prince Hall Affiliated Masons)
- 211. Mother Wit Institute, Inc.
- 212. Mount Bethel Human Services Corporation
- 213. Mount Calvary Missionary Baptist Church
- 214. MUV
- 215. My Florida Families/Florida Department of Children and Families
- 216. Naleo Educational Fund
- 217. National Alliance for Hispanic Health
- 218. National Coalition of 100 Black Women/ Pensacola Chapter
- 219. National Hispanic Medical Association
- 220. Neighborhood Medical Center
- 221. Neville Ballin, MD
- 222. NORML Central Florida
- 223. NORML Tallahassee
- 224. North Dade Regional Library
- 225. North Florida Hispanic Association

- 226. Northwest Florida Area Agency on Aging Inc./ Aging and Disability Resource Center
- 227. Northwest Florida Heart Group
- 228. NurseDebb, LLC
- 229. Nutrition Abbey
- 230. Oasis/Florida Department of Health
- 231. Office of State Attorney, 2nd Judicial Circuit
- 232. Office of State Attorney, 13th Judicial Circuit
- 233. Olivia Jones, Mary Kay Consultant
- 234. Olympia Compounding Pharmacy
- 235. On My Nerves Inc.
- 236. Orange County Corrections Department
- 237. Orange County Sheriff’s Office
- 238. OraSure Technologies, Inc.
- 239. Order of the Easter Star – Jerusalem Chapter
- 240. Ounce of Prevention Fund
- 241. P3 Community Church
- 242. Painalgia Relief Center
- 243. Panama Pharmacy
- 244. Panhandle Area Education Consortium
- 245. Pensacola Habitat for Humanity
- 246. Pensacola Police Department
- 247. Pennsylvania Department of Agriculture
- 248. Personal Security Concepts, LLC
- 249. PHI Entertainment LLC
- 250. Players Only
- 251. Pompano Christian Clergy Council
- 252. Powerhouse COGIC
- 253. Premier Events NCF - Levy County
- 254. Proforce Law Enforcement
- 255. Prospera Florida
- 256. Quincy First Elizabeth Missionary Baptist Church
- 257. Quintette Community Center
- 258. ReleafMD
- 259. Restoring the Village
- 260. Riverdale Foot, Ankle & Leg Clinic, Riverdale, GA
- 261. Robert C. Allen, P.A.
- 262. Robert Robino Productions
- 263. Robert W Saunders, Sr. Public Library
- 264. Roberto Dorneval, Community Member
- 265. Rosenthal Consulting Solutions
- 266. Rymedi
- 267. Sanders-Beach Corinne Jones Resource Center
- 268. SCRAM Systems
- 269. Seminole County Sherriff’s Office
- 270. Sickle Cell Disease Association
- 271. Sigma Lambda Beta International Fraternity, Inc
- 272. Simon Scott Senior Center
- 273. Singleton Legal PLLC
- 274. Sixteen20
- 275. Sixth Avenue Missionary Baptist Church
- 276. South Florida Men's Wellness
- 277. Southwest Focal Point Senior Center
- 278. Southwood Towne Center
- 279. St. John Progressive Missionary Baptist Church
- 280. “Street Minister” Anthony Durden
- 281. Sumter Correctional Institution Work Group -Bushnell
- 282. Survive and Thrive

1. Tallahassee Community College Gadsden Center
2. Tallahassee Community College Capital City Classic
3. Tallahassee MS Group
4. Tallahassee Nights Live
5. Tallahassee Senior Center
6. Tallahassee Veterans Outreach
7. Tampa Bay Wellness Festival
8. Tampa Hispanic Heritage Inc.
9. Tampa Police Department
10. The Holistic Cannabis Community
11. The Image Makers
12. The MaxOut Church
13. The Transition House
14. Tiffany Bowden, PhD
15. TK Education and Consulting PLLC
16. Total Pain Relief
17. Town of Century Florida
18. Trulieve
19. Treadwell Farms
20. UF Health Shands Pastoral Services Team
21. UF/IFAS Extension - Suwannee County
22. U.S. Department of Transportation Federal Motor Carrier Safety Administration
23. University of West Florida
24. Valencia Community College
25. Vogel Group
26. Volusia County FAMU Alumni Association
27. Volusia County of African American Leadership Council, Inc
28. Veriheal
29. Wakulla Correctional Institution
30. Watson Strategies
31. Wedgewood Community Center and Park
32. West Florida Baptist District Association
33. Whole Child Leon
34. Wholistic ReLeaf
35. Woodland Heights Neighborhood Association
36. World Financial Group
37. Your Enthusiasm is Contagious

APPENDIX C

Below are links to MMERI-owned channels (links to the website, podcast, PSAs, newsletter signup) and news coverage about the program.

MMERI Communication Channels

Website

<https://mmeri.famu.edu/>

MMERI Marijuana Education Modules

<https://educate.mmeri.famu.edu/public>

MMERI Forum Radio

Conversations on Cannabis Facebook

<https://www.facebook.com/MMERIForumRadio/>

MMERI Forum Radio

Conversations on Cannabis Instagram

@MMERIForumRadio

MMERI Forum Radio

Conversations on Cannabis X (formerly Twitter) @

MMERIForumRadio

MMERI on LinkedIn

<https://www.linkedin.com/in/famu-medical-marijuana-education-research-initiative-124b092bb/>

MMERI *Conversations on Cannabis*

Forums and Events

<https://mmeri.famu.edu/talk/>

MMERI Forum Radio on YouTube

<https://www.youtube.com/@mmeriforumradioatfloridaaml159>

MMERI Forum Radio Podcast

<https://mmeri.famu.edu/podcasts/>

MMERI Videocast

<https://mmeri.famu.edu/videos/>

MMERI Research Archive

<https://mmeri.famu.edu/research-grantees#repository>

News About MMERI

July 24, 2025 • *The Westside Gazette*

Clearing the smoke about Florida's marijuana laws

<https://thewestsidegazette.com/clearing-the-smoke-about-floridas-marijuana-laws/>

July 25, 2025 • *Florida Courier*

Clearing the smoke about Florida's marijuana laws

https://www.flcourier.com/commentaries/clearing-the-smoke-about-florida-s-marijuana-laws/article_bcc875b7-68c6-4a77-b702-6d2c00afacdb.html

August 8, 2025 • *Caribbean Today*

Clearing the smoke about Florida's marijuana laws

<https://www.caribbeantoday.com/sections/fyi/clearing-the-smoke-about-florida-s-marijuana-laws>

August 8, 2025 • *Calle Ocho*

Florida's marijuana laws: Clearing the smoke to understand the realities

<https://calleochonews.com/understanding-realities-floridas-marijuana-laws/>

August 21, 2025 • *The Westside Gazette*

Cannabis 'Holds Promise' As Sickle Cell Treatment

<https://thewestsidegazette.com/cannabis-holds-promise-as-sickle-cell-treatment/>

September 1, 2025 • *Caribbean Today*

Cannabis 'Holds Promise' As Sickle Cell Treatment

<https://www.caribbeantoday.com/sections/health/cannabis-holds-promise-as-sickle-cell-treatment>

September 19, 2025 • *Calle Ocho News*

How New Law Could Impact Medical

Marijuana Patients

<https://calleochonews.com/floridas-new-law-medical-marijuana-patients/>

September 25, 2025 • *Westside Gazette*

How New Law Could Impact Medical

Marijuana Patients

<https://thewestsidegazette.com/how-new-law-could-impact-medical-marijuana-patients/>

September 30, 2025 • *Caribbean Today*

How New Law Could Impact Medical

Marijuana Patients

<https://www.caribbeantoday.com/sections/fyi/how-new-law-could-impact-medical-marijuana-patients>



MMERI Forum Radio



MMERI Forum Radio



@MMERIForumRadio



@MMERIForumRadio



FAMU ((MMERI)) Medical Marijuana Education Research Initiative



FLORIDA A&M UNIVERSITY
MEDICAL MARIJUANA EDUCATION
AND RESEARCH INITIATIVE

CONTACT US



625 E. Tennessee Street, Suite 210
Tallahassee, Florida 32308



(850) 561-2456



MMERI@famu.edu